



Manitoba Model Forest Inc.

2007-08 (6 Month)

Annual Report and Financial Report To The Forest Communities Program



December, 2008

Table of Contents

1.0 Introduction.....	3
2.0 Activity and Project Reports.....	5
3.0 Progress Towards Intended Outcomes	50
3.1 Immediate Outcomes	52
3.2 Intermediate Outcomes	55
3.3 Long-term Outcomes	58
4.0 Annual Financial Report.....	58
5.0 Other	63

1.0 Introduction

This is the first annual report of the Manitoba Model Forest (MBMF) under the Forest Communities Program (FCP) of Natural Resources Canada. The format of this report follows the template provided by the Canadian Forest Service, and covers the first six months of the FCP, from October 1, 2007 to March 31, 2008. This represents period of significant transition for the Manitoba Model Forest. The former Model Forest Program, funded by Natural Resources Canada came to an end on September 30, 2007 and the new FCP began on October 1, 2007. During this first six month period of the FCP, cash funding to the MBMF was \$504,680 from all sources (including \$175,000 from Natural Resources Canada – Canadian Forest Service under the FCP), with an additional estimated in-kind contribution of \$1.2 million from all partners.

During the first six months of the FCP much energy was directed towards implementation of the new program. This included the development and approval of a 5 year contribution agreement with Natural Resources Canada, as well as the development and approval of a 5 Year Strategic Plan, a 6 Month work plan for 2007/08, and a 2008/09 annual work plan. It was a significant challenge to develop all three documents within the first 6 months of the FCP, as well as to implement the first work plan.

All projects implemented in our first 6 Month Work Plan (and described in this Annual Report) have a basis in our 5 Year Strategic Plan. As such, all projects and activities also meet the objectives of the FCP. It is important to note that due to the large number of projects and activities in the MBMF 6 Month Work Plan, not all projects received cash funding from the FCP. Many projects received cash funding from other project partners only. Regardless of the funding source, all projects and activities of the MBMF fall under the 5 Year Strategic Plan, and thus, the FCP.

Despite this heavy focus on the administrative tasks, the MBMF made great strides in initiating the proposed projects under the 6 month work plan. This included a number of projects initiated under the former Model Forest Program, as well as new projects that reflect some of the newer objectives of the FCP. A new General Manager was hired by the Manitoba Model Forest, and started work on November 1, 2007. The MBMF Board of Directors met twice during the first 6 months of the FCP, focusing most of its attention on the development of the strategic plan and annual work plans. Working Groups and Project Committees were developed, and tasked with developing project outlines and budgets, as well as tracking progress on projects.

Under the FCP, the MBMF has developed six main program theme areas. This includes 1) program administration, 2) forest community engagement and capacity building, 3) integrated landscape management, 4) education, 5) international programs, and 6) communications and networking.

Under the Forest Community Engagement and Capacity Building theme area, the Committee for Cooperative Moose Management undertook aerial surveys to assess the population response of moose to previous access and hunting controls in parts of the MBMF area. Hollow Water First Nation, a member of the moose committee, also held community workshops to explore options for a moose co-management regime with the Province of Manitoba. In addition, the Hollow Water First Nation Traditional Area Advisory Committee (TAAC) met several times to discuss resource management issues in their traditional territory. Discussions began with Black River First Nation, Brokenhead Ojibway Nation and Sagkeeng First Nation concerning the establishment of TAACs in their communities.

Under the Integrated Landscape Management theme area, several science-based research and monitoring projects initiated under the former Model Forest Program continued. A risk assessment was conducted for three woodland caribou ranges that will provide the basis for the development of a caribou conservation strategy for these ranges. All historic and relevant data and information was also compiled for these ranges in preparation for the above-mentioned conservation strategy. A new project was initiated to study the use of linear corridors by wolves, and the implications for caribou management. This involved placing GPS and VHF collars on wolves. In addition, a combination of 24 GPS and VHF collars were also deployed on woodland caribou to study habitat use, recruitment and survival, and the response of caribou to timber harvesting. A landscape patch analysis tool was used to better understand the use and quality of caribou habitat in the MBMF area.

Under the Education theme area, many presentations about the MBMF and our new programs were made to schools, NGOs and other organizations. MBMF education projects, including our new woodland caribou curriculum was presented at the Forest Ed West conference in Kelowna, B.C. The new Winnipeg River Learning Centre, a cornerstone of our education and training endeavors under the FCP, started up operation, offering a variety of training programs to our local communities. The centre will help to provide much needed training in a variety of career paths, and will help set the stage for a more diverse, trained workforce for the future. Planning for the 2008 Junior Rangers program was initiated and it is anticipated that more than 30 local First Nation and non-Aboriginal students will participate in the program in the summer of 2008.

Under the International theme area, the MBMF and Brokenhead Ojibway Nation developed a joint proposal to the Canadian International Development Agency (CIDA) to initiate a project on ethno-tourism with the Indigenous Nairi Awari communities of Costa Rica. This proposal was subsequently approved (in the summer of 2008). In early 2008, the MBMF General Manager and President made a site visit to the Indigenous communities to begin some of the project activities.

Under the Communications theme area, the MBMF developed several new communication products, including a new floor standing display, re-designed our website and digitized all of our previous 15 years of reports. All reports are now archived in pdf format on DVD, and is available to any interested party.

In summary, the first 6 months of the FCP was a challenging period. The administrative tasks involved with starting up a new program, while attempting to initiate projects at the same time provided for a busy six months. In addition, the long transition period from the time of the submission of the proposal by the MBMF to the FCP, to the end of the former Model Forest Program and the start of the new FCP resulted in many projects being put on hold, and the need to re-engage some of our partners. A considerable effort was spent in the final year and a half of the former Model Forest Program to develop a proposal for the new FCP. As a result, progress and activities in some community-based projects slowed considerably. A key challenge for the MBMF will be to reinvigorate these projects and re-engage those project partners.

2.0 Activity and Project Reports

The following section provides a summary of each of the projects and/or activities that were undertaken by the MBMF in the 2007-08 (6 month) program year. For each project, the purpose and a description of the activities and achievements are provided, as well as a summary of each project budget, contributing partners and the outputs. Projects are organized by Theme Area. Each Theme Area is color-coded (see below) to easily identify which theme area a project falls under.

Color Codes for Theme Areas

Management and Administration
Forest Community Engagement and Capacity Building
Integrated Landscape Management
Education
International Programs
Communications and Outreach

Project Title: Staff Salaries and Associated Deductions Project Number: 07-1-01 Theme Area: Management and Administration Project Leader: Beverly Dube, MBMF Project Status: On-going, Year 1 of 5	2007-08
---	---------

Purpose: To ensure the proper and timely management of the administrative affairs of the MBMF by supporting the salaries/contracts of the Executive Assistant and General Manager.

Report: Funding was used to pay the salary, Employment Insurance and Canada Pension Plan obligations of the MBMF Executive Assistant, as well as the contract for the General Manager. Note: Budgeted amounts do not include a Benefits package. Key activities include:

- Overseeing the efficient day to day operations of the office
- On-going budgeting and financial management of the MBMF
- Development of a 5 Year Strategic Plan, signing of a Contribution Agreement between NRCan and the MBMF under the Forest Communities Program, development of the first Annual (6 month) Work Plan under the Forest Communities Program
- Development of budgets and 2008-09 Annual Work Plan under the Forest Communities Program
- Development of funding proposals, including a proposal to CIDA for a joint project with the Reventazon Model Forest in Costa Rica
- Preparation of financial and activity reports to the MBMF Board of Directors for Board meetings
- Organizing MBMF Working Group meetings and individual project steering committee meetings
- Negotiation of funding contracts with MBMF funders and preparation of invoices
- Presentations to new and existing partners and interested parties re: FCP

Note: There was a slight surplus of FCP funding (revenues exceed expenses by \$2,175) during the first 6 months of the FCP.

Expenditures and Contributions:

Project Expenditures	Cash	In-kind	Total
Administration	\$53,515	-	\$53,515
Project Activities	-	-	-
Total	\$53,515	-	\$53,515
Project Contributions			
NR-Can-CFS (FCP)	\$55,690	-	\$55,690
Total	\$55,690	-	\$55,690

Outputs:

- 5 Year Strategic Plan
- Contribution agreement with NRCan-CFS
- Contribution agreements with other funding partners
- Annual (6 month) Work Plan
- F2008-09 Work Plan
- Budgets and financial reports
- Funding proposal to CIDA
- Minutes of Board, Working Group and Project Committee meetings

- | |
|---|
| <ul style="list-style-type: none">▪ Project planning documents▪ Governance Policies and Procedures |
| Other Project Partners: None |

Project Title: Supplies and Services Project Number: 07-1-02 Theme Area: Management and Administration Project Leader: Beverly Dube, MBMF Project Status: On-going, Year 1 of 5	2007-08
--	---------

Purpose: To provide for the proper functioning of the MBMF office, coverage for liability and the financial accountability of the MBMF

Report: Funding was used to pay for all office supplies and services, as well as accounting services for the financial audit and various insurances. Key activities and components included:

- Purchase of a new office computer, printer, computer software, LCD projector, projector screen, digital camcorder
- Service contract for photocopier
- Phone and internet service
- Mail and courier services
- Janitorial service
- Utilities (heat, lighting), office space
- Fire and theft insurance, Board of Directors Liability and Accident insurance
- Annual incorporation fee, Chamber of Commerce fee
- Audit and auditor fees

There was a surplus of FCP funding (revenues exceed expenses by \$5,462) during the first 6 months of the FCP. This surplus was used in the Traditional Area Advisory Committee project (see page 17).

Project Expenditures and Contributions:

Project Expenditures	Cash	In-kind	Total
Administration	\$16,645	\$12,500	\$29,145
Project Activities	-	-	-
Total	\$16,645	\$12,500	\$29,145
Project Contributions	Cash	In-kind	Total
NR-Can-CFS (FCP)	\$21,500	-	\$21,500
MBMF	\$607	-	\$607
Tembec	-	\$12,500	\$12,500
Total	\$22,107	\$12,500	\$34,607

Outputs:

- Properly functioning MBMF office
- Insurance policies
- Financial audit for 2007-08

Other Project Partners: None

Project Title: Travel Project Number: 07-1-04 Theme Area: Management and Administration Project Leader: Beverly Dube, MBMF Project Status: On-going, Year 1 of 5	2007-08
---	---------

Purpose: To provide for travel to meetings, workshops and conferences relevant to the MBMF program for staff

Report: Funding was used to pay for travel (including airfare, hotel, mileage for personal vehicles, meals and incidentals) associated with attending meetings, workshops and conferences related to MBMF projects and programs. Travel rates are set by MBMF policy.

Funding was used to pay for travel for the following meetings/workshops:

- Project meetings with Reventazon Model Forest and visit to the indigenous community of Jameikari in Costa Rica
- Expenses related to hosting the FCP/CMFN meeting in Winnipeg in February 2008. Tour for FCP/CMFN guests of the MBMF area
- Travel related to various local MBMF meetings (Board, working group, project steering committees)

There was a slight surplus of FCP funding (revenues exceed expenses by \$41) during the first 6 months of the FCP.

Project Expenditures and Contributions:

Project Expenditures	Cash	In-kind	Total
Administration	\$5,986	-	\$5,986
Activities	-	-	-
Total	\$5,986	-	\$5,986
Project Contributions	Cash	In-kind	Total
NR-Can-CFS (FCP)	\$6,000	-	\$6,000
MBMF	\$27	-	\$27
Total	\$6,027	-	\$6,027

Outputs:

- Staff travel to MBMF Board and Working Group/Project Steering Committee Meetings
- Meetings in Costa Rica re: eco-tourism project with Reventazon MF and community of Jameikari
- Field tour of MBMF area in Feb 2008 for FCP/CMFN guests

Other Project Partners: None

Project Title: Board Support and Travel Project Number: 07-1-06 Theme Area: Management and Administration Project Leader: Beverly Dube, MBMF Project Status: On-going, Year 1 of 5	2007-08
---	---------

Purpose: To provide for travel and support for Board meetings

Report: The MBMF Board of Directors is made up of a large diversity of organizations and communities and provides support and direction to the MBMF programs. Funding in this “project” is used to pay for costs (meals, room rentals, mileage for Board members) associated with Board meetings.

- During the first 6 months of the FCP, the MBMF Board met twice (on December 10, 2007 and February 20, 2008).
- Much of the December Board meeting focused on updates regarding the 5 year strategic plan development and contribution agreement with CFS. The Board provided input into the development of the first 6 month work plan and the fiscal 2008-09 work plan. Presentations to the Board were also made, and included the status of educational projects and the scenario planning project. Lorne West (CFS) handed out plaques on behalf of the MBMF to Board members who have been part of the Canadian Model Forest program since its inception.
- The February Board meeting focused on the approval of the 2008-09 work plan as well as several project updates. The Board meeting was also attended by approximately 15 guests from the joint FCP/CMFN meeting in Winnipeg.
- Tour of the MBMF area for FCP/CMFN meeting guests
- The MBMF also held a workshop on January 17, 2008 with the Board and other interested parties and funding agencies to identify priority projects for the 2008-09 work plan year, based on the 5 year strategic plan

There was a slight surplus of non-FCP funding (revenues exceed expenses) during the first 6 months of the FCP. This funding was carried forward for use in the 2008-09 fiscal year. There was also a slight over-expenditure of FCP funding (Actual: \$7,070 versus budget: \$7,000)

Project Expenditures and Contributions:

Project Expenditures	Cash	In-kind	Total
Administration	\$7,521	\$32,000	\$39,521
Activities	-	-	-
Total	\$7,521	\$32,000	\$39,521
Project Contributions			
	Cash	In-kind	Total
NRCan-CFS (FCP)	\$7,000	-	\$7,000
Board members (26 organizations)	-	\$32,000	\$32,000
MBMF	\$500	-	\$500
Other MBMF Communities	\$500	-	\$500
Total	\$8,000	\$32,000	\$40,000

Outputs:

- Board meeting minutes (December 2007 and February 2008)
- Approved 5 Year Strategic Plan
- Approved Annual Work Plans (6 month and F2008-09)

- | |
|--|
| <ul style="list-style-type: none">▪ Approved Annual Budgets▪ Program/Project Planning Documents. Program prioritization outcomes. |
|--|

Other Project Partners: Board members, representing 26 organizations

Project Title: Forest Community Engagement and Capacity Building Working Group Support Project Number: 07-5-01 Theme Area: Forest Community Engagement and Capacity Building Project Leader: Bob Yatkowsky, Tembec and Stan Kaczanowski, Manitoba Conservation Project Status: On-going, Year 1 of 5	2007-08
---	---------

Purpose: To provide for travel and support for the Working Group meetings and for members to attend conferences and other relevant meetings

Report: The Forest Community Engagement and Capacity Building Working Group meets periodically to develop work plans and track progress of on-going projects under the working group's direction (i.e., under the theme area of the same name). Funding is used to pay for costs associated with Working Group meetings including mileage, meals, room rentals and travel of working group members to other relevant meetings and/or conferences

- During the first six months of this work plan, the Working Group met once, on January 14, 2008. The Work Group discussed the prioritization of projects for the F2008-09 work plan year.
- Travel support for MBMF President (Carl Smith) to attend project meetings with Reventazon MF and visit to indigenous community of Jameikari in Costa Rica. Discussions were held in Jameikari regarding community involvement in Model Forest decision-making and involvement in projects.

There was a slight surplus of FCP funding (revenues exceed expenses by \$108) during the first 6 months of the FCP.

Project Expenditures and Contributions

Project Expenditures	Cash	In-kind	Total
Administration	-	-	-
Activities	\$2,392	\$1,200	\$3,592
Total	\$2,392	\$1,200	\$3,592
Project Contributions	Cash	In-kind	Total
NRCan-CFS (FCP)	\$2,500	-	\$2,392
Tembec	-	\$400	\$400
Shining Waters Heritage Region	-	\$200	\$200
RM of Lac du Bonnet	-	\$200	\$200
Town of Lac du Bonnet	-	\$200	\$200
MB Metis Federation	-	\$200	\$200
Total	\$2,500	\$1,200	\$3,700

Outputs:

- Program/Project Planning Document and Meeting minutes
- Working Group Budget
- PowerPoint presentation related to specific projects under the Working Group
- Meeting in Costa Rica between MBMF President and Costa Rican project partners

Other Project Partners: Working Group members, representing 13 organizations. These include Brokenhead Ojibway Nation, MB Conservation, Tembec, Manitoba Trapper's Association, Black River First Nation, Hollow Water First Nation, Sagkeeng First Nation, Winnipeg River Learning Centre, MB Hydro, Manitoba Metis Association, Woodlot Association of Manitoba, Manitoba

Project Title: Committee for Cooperative Moose Management Project Number: 07-5-13 Theme Area: Forest Community Engagement and Capacity Building Project Leader: Kelly Leavesley, Manitoba Conservation Project Status: On-going, Year 1 of 5	2007-08
---	---------

Purpose: To provide support for the Committee for Moose Management to meet and discuss moose management issues in the MBMF area, as well as to further discussions with local First Nation communities regarding a proposed moose co-management model.

Report: Since 1992, the “Moose Committee” (a committee of the MBMF) has conducted research into the effects of various forest management techniques (harvesting, renewal, access control) and hunting management options on moose populations, undertaken public education activities and provided a mechanism for local communities to have input into Tembec’s annual forest management operating plans. During the first 6 months of the FCP, the moose committee undertook the following activities:

- In the winter of 2007/08, Manitoba Conservation (a partner of the moose committee) undertook the collection of moose distribution data using aerial surveys in the Happy Lake region of the MBMF area. The region has been part of an on-going management experiment to assess the effects of hunting and access (road) closures on a local moose population in an area of past forest harvesting activity. The moose surveys were also conducted in tandem with a large-scale woodland caribou distribution survey.
- Synthesis of historic and current moose population information in the MBMF area
- Hollow Water First Nation (a member of the Moose Committee) held meetings within their community to discuss the potential for a moose co-management trial area in their traditional land use area. With the aid of the MBMF Community Engagement Consultant, Hollow Water First Nation began developing a moose co-management proposal to INAC (to be completed and submitted in fiscal 2008/09).

There was a small surplus (\$10) of FCP funding in the project during the first 6 months of the FCP.

Project Expenditures and Contributions

Project Expenditures	Cash	In-kind	Total
Administration	-	-	-
Project Activities	\$2,300	\$12,000	\$14,300
Total	\$2,300	\$12,000	\$14,300
Project Contributions	Cash	In-kind	Total
NRCan-CFS (FCP)	\$2,310	-	\$2,300
Manitoba Conservation	-	\$10,000	\$10,000
Hollow Water First Nation	-	\$2,000	\$2,000
Total	\$2,310	\$12,000	\$14,310

Outputs:

- Aerial survey in Happy Lake moose management area
- Data analysis of historic and current moose data
- Meetings in Hollow Water First Nation re: moose co-management pilot project

Other Project Partners: Manitoba Hydro, Tembec, Brokenhead Ojibway Nation, Manitoba Metis Federation, Manitoba Trappers Association, Black River First Nation, Pinawa Wildlife Association, Brokenhead River Fish and Game Association, Manitoba Archers and Bow Hunters Association.

Project Title: Program Initiation in Western Manitoba Project Number: 07-5-14 Theme Area: Forest Community Engagement and Capacity Building Project Leader: Brian Kotak, MBMF and Barry Waito, Louisiana Pacific Project Status: On-going, Year 1 of 5	2007-08
---	---------

Purpose: To provide support to the development of a MBMF “satellite” project area in western Manitoba

Report: Over the last 5 years, Louisiana Pacific (LP) has supported several MBMF projects in eastern Manitoba. With the initiation of the Forest Communities Program, the MBMF has committed to initiate projects in western Manitoba, where LP operates. In addition, we are committed to establishing partnerships with First Nation communities in western Manitoba, in order to export “the Model Forest” model for partnership building.

Specific activities that occurred during the first six months of the FCP include:

- Staff from Louisiana Pacific were invited to, and attended MBMF Board meetings in the fall of 2007 and winter of 2008, as well as attending planning meetings for the Integrated Landscape Management Working Group to discuss LPs financial support of MBMF projects in eastern Manitoba, and ideas for projects in western Manitoba. Projects with LP, including a landscape design workshop, and a watershed management workshop are expected to occur in 2008.
- Invitations were extended to the West Region Tribal Council (WRTC) to attend project planning meetings and MBMF Board meetings. Unfortunately, conflicts with scheduling prevented the WRTC from attending.
- A meeting was held with the WRTC to discuss potential projects with First Nations in western Manitoba. A proposal for a traditional land use study (which would include LPs forest management area), and written by the WRTC, was discussed. The WRTC developed the proposal over the winter of 2007/08 and submitted the proposal to several funding agencies (including the MBMF). The project will begin in 2008.

Note: No projects were initiated in the first 6 months of the FCP in western Manitoba. Cash funding of \$12,500 from LP was carried over to the 2008-09 fiscal year.

Project Expenditures and Contributions

Project Expenditures	Cash	In-kind	Total
Administration	-	-	-
Project Activities	-	\$1,000	\$1,000
Total	-	\$1,000	\$1,000
Project Contributions	Cash	In-kind	Total
Louisiana Pacific	\$12,500	\$500	\$13,500
West Region Tribal Council	-	\$500	\$500
Total	\$12,500	\$1,000	\$13,500

Outputs:

- Meetings with Louisiana Pacific to identify their program needs in western Manitoba
- Meeting with West Region Tribal Council, regarding future MBMF programming in western Manitoba

Other Project Partners: Potential western Manitoba First Nation communities include: Ebb and Flow First Nation, Tootinawazibeeng First Nation, Waywayseecappo First Nation, Wuskwi Sipihk First

Nation, Pine Creek First Nation, Sapotaweyak Cree Nation, Gamblers First Nation, Keeseekoowenin First Nation and O-Chi-Chak-Ko-Sipi First Nation.

Project Title: Traditional Area Advisory Committees (TAACs) Project Number: 07-5-03 Theme Area: Forest Community Engagement and Capacity Building Project Leader: Rene Barker, Community Involvement Consultant Project Status: On-going, Year 1 of 5	2007-08
--	---------

Purpose: To support the establishment and functioning of Traditional Area Advisory Committees (TAACs) in each of the 4 MBMF area First Nation communities, as a mechanism to facilitate discussion between communities and resource industries.

Report: With the assistance of the MBMF, over the last 5 years two First Nation communities in the MBMF area have established Traditional Area Advisory Committees (TAACs). These community-based committees provide advice and information to their Chief and Councils on matters relating to resource development within their community's traditional areas. TAACs operate at arms-length from Chief and Council. Resource industries interact directly with the TAACs, discussing future or planned resource development activities (e.g., forestry, road building, mining exploration, etc). In the first 6 months of the FCP, the following activities occurred:

- Meetings of the Hollow Water First Nation TACC were held approximately every 2-3 weeks to discuss issues of natural resource management in the Hollow Water traditional land use area, as well as the development of a moose co-management proposal
- Meetings with Chief and Council of Black River First Nation to discuss re-initiation of their existing TAAC. During the first 6 months of the FCP, the Black River TAAC had not met yet, but there was a desire to re-establish their TAAC.
- Meetings with Chief and Council (and others) from Sagkeeng First Nation and Brokenhead Ojibway Nation to initiate TAACs in their communities. During the first 6 months of the FCP, Brokenhead Ojibway Nation expressed interest in establishing a TAAC. Sagkeeng First Nation wanted to proceed more slowly.

Funding in the first six months was used primarily to pay the contract services of a community involvement consultant and to provide start up funds for the Black River First Nation TAAC.

Note: An additional \$5,000 of FCP funding (from Supplies and Services-not shown in the table below) was used for the TAAC project. The Tembec cash contribution of \$5,000 was not used and has been carried over to F2008-09.

Project Expenditures and Contributions

Project Expenditures	Cash	In-kind	Total
Administration	-	-	-
Project Activities	\$15,000	\$17,000	\$32,000
Total	\$15,000	\$17,000	\$32,000
Funding Partner	Cash	In-kind	Total
NRCan-CFS (FCP)	\$5,000	-	\$5,000
Manitoba Hydro	\$5,000	-	\$5,000
Tembec Enterprises Inc	\$5,000	\$5,000	\$10,000
MBMF area First Nations	-	\$10,000	\$20,000
MB Conservation	-	\$2,000	\$2,000
Total	\$15,000	\$17,000	\$32,000
Outputs:			

- Meetings and meeting minutes associated with the Hollow Water First Nation TAAC
- Meetings with Chief and Council regarding re-initiation of the Black River First Nation TAAC
- Meetings and discussions with Brokenhead Ojibway Nation and Sagkeeng First Nation regarding establishment of TAACs
- Provision of a venue for discussions between First Nation communities and resource industries with respect to resource extraction activities in each of the community's traditional areas.

Other Project Partners: None

Project Title: First Nation Land Use Planning Project Number: 07-5-15 Theme Area: Forest Community Engagement and Capacity Building Project Leader: Rene Barker, MBMF Community Involvement Consultant Project Status: On-going, Year 1 of 5	2007-08
Purpose: To support the development and continual improvement of MBMF area First Nation land use plans	
Report: First Nations values and land use information is a critical component of any integrated landscape management plan. In Phase II of the Canadian Model Forest program, the MBMF provided support to two First Nation communities in the MBMF area to develop land use plans. These plans provide each community with a written and GIS-based record of locations of spiritual, cultural and economic importance in their traditional areas and provide information necessary for future land use decisions. The use of such land use information however, has not been consistent between the communities. Also, there are other First Nation communities in the MBMF area that do not have traditional land use plans. <ul style="list-style-type: none"> ▪ There was no activity in this project during the first 6 months of the FCP. Funding for this project, originally to be provided by the First Nations communities, was not obtained. The project will be initiated in F2008-09. 	
Project Expenditures and Contributions There were no project expenditures or contributions during the first 6 months of the FCP	
Outputs: <ul style="list-style-type: none"> ▪ None in the first 6 months of the FCP 	
Other Project Partners: None	

Project Title: Trapper Involvement Project Number: 07-5-10 Theme Area: Forest Community Engagement and Capacity Building Project Leader: Bob Yatkowsky, Tembec Enterprises Inc. Project Status: On-going, Year 1 of 5	2007-08
--	---------

Purpose: To involve the trapping community in MBMF projects and build capacity for their involvement in natural resource management decision-making.

Report: In Phase II of the Model Forest Program, the MBMF worked with the trapping community to develop a GIS-based database of trapper’s values (location of trails, cabins, high value habitat) in each registered trap line. This product has been used effectively to help plan forest harvesting areas in trap lines and to develop associated mitigation plans. In addition, the MBMF, with the assistance of the Manitoba Trappers Association, is currently completing the development of a Best Management Practices (BMP) manual entitled “Integrating Furbearer Habitat Requirements and Trapper Concerns in Forestry Development”. The manual is written from a trapper’s perspective. The objectives of the manual are: 1) to create effective communications amongst industry, government and the trapping community, 2) promote respectful relationships in resource-based planning and development, 3) minimize negative impacts that forestry activities may have on trapping activities, 4) enhance stewardship initiatives in forestry and trapping, and 5) increase knowledge and understanding for resource users. The manual is currently in the last phase of editing and will be printed very soon.

In the first 6 months of the FCP, the following activities were undertaken:

- Revisions to the draft BMP manual. Final revisions will occur in the 2008-09 fiscal year, as well as printing of the manual and creation of a digital (pdf) copy for inclusion on the MBMF website
- Meetings in local communities will be held in 2008-09 to “roll out” the manual

Funding in the first six months was used primarily to pay the contract services of a community involvement consultant.

Note: the table below indicates a deficit (expenses exceed funding). Actual funding for the project is greater than that shown. Additional funding was provided by Tembec prior to the FCP, but is not shown.

Project Expenditures and Contributions:

Project Expenditures	Cash	In-kind	Total
Administration	-	-	-
Project Activities	\$3,267	\$4,500	\$7,767
Total	\$3,267	\$4,500	\$7,767
Funding Partner			
Tembec Enterprises Inc	\$2,500	\$1,500	\$4,000
Manitoba Trapper’s Association	-	\$3,000	\$3,000
Total	\$2,500	\$4,500	\$7,000

Outputs:

- Draft Trapper BMP manual

Other Project Partners: None

Project Title: Non-Timber Forest Products (NTFPs)			2007-08
Project Number: 07-5-18			
Theme Area: Forest Community Engagement and Capacity Building			
Project Leader: Bob Austman, MBMF Education Coordinator Consultant			
Project Status: On-going, Year 1 of 5			
Purpose: To explore opportunities for alternative economic development in the MBMF area based on Non-Timber Forest Products			
Report: There are many opportunities for the development of non-timber forest product (NTFP) businesses in the MBMF area. NTFPs can provide opportunities for communities by building on local skills and knowledge of the forest. In most instances, NTFPs represent an opportunity for supplemental income, not as a main, annual income.			
<p>During the first 6 months of the FCP, the MBMF worked in collaboration with the Manitoba Forestry Association to deliver a NTFP workshop on maple syrup production using Manitoba Maple trees. The workshop was attended by approximately 50 people, and was held at Balmoral, Manitoba.</p> <p>The NTFP project got off to a slow start during the first 6 months of the FCP. Over the next several years, the MBMF will host a number of workshops for MBMF communities focused on economic opportunities with respect to NTFPs. We intend to work with Royal Roads University (BC) and the Northern Forest Diversification Centre in The Pas, Manitoba, as well as the up-coming potential national Strategic Initiative on this topic within the Canadian Model Forest Network. We will develop a community survey to gauge interest in NTFPs and work with interested individuals and communities to facilitate opportunities.</p> <p>During the first 6 months of the FCP, the project generated a surplus of \$4,000 of non-FCP funding. This has been carried over to the 2008-09 fiscal year.</p>			
Project Expenditures and Contributions:			
Project Expenditures	Cash	In-kind	Total
Administration	-	-	-
Project Activities	\$1,000	\$1,500	\$2,500
Total	\$1,000	\$1,500	\$2,500
Funding Partner	Cash	In-kind	Total
NRCan-CFS (core funding)	\$1,000	-	\$1,000
Manitoba Forestry Association	-	\$1,000	\$1,000
MBMF area communities	\$2,500	-	\$2,500
MBMF	\$1,500	\$500	\$2,000
Total	\$5,000	\$1,500	\$6,500
Outputs:			
<ul style="list-style-type: none"> ▪ Community workshop on maple syrup production 			
Other Project Partners: None			

Project Title: Integrated Landscape Management Working Group Support Project Number: 07-2-23 Theme Area: Integrated Landscape Management Project Leader: Vince Keenan, Tembec Enterprises Inc. Project Status: On-going, Year 1 of 5	2007-08
---	---------

Purpose: To provide for travel and support for ILM Working Group meetings

Report: The ILM Working Group meets periodically to develop work plans and track progress of on-going projects under the working group's direction. Funding is used to pay for costs associated with ILM Working Group meetings, as well as to provide funding to attend relevant conferences for members of the working group.

During the first 6 months of the FCP, the following activities were undertaken:

- The working group met twice (on October 4, 2007 and January 9, 2008) to develop the work plan for the 2008-09 fiscal year
- Funding from the working group was used to send a researcher from the Eastern Manitoba Woodland Caribou Advisory Committee to a workshop in Toronto dealing with conducting risk assessments under the Species at Risk Act. Subsequently, the research helped the Model Forest caribou committee to undertake such an assessment for woodland caribou herds in and north of the MBMF area (see project report for 07-2-23).

There was a small surplus (\$46) of FCP funding in the project during the first 6 months of the FCP.

Project Expenditures and Contributions:

Project Expenditures	Cash	In-kind	Total
Administration	-	-	-
Project Activities	\$2,454	\$4,800	\$7,254
Total	\$2,454	\$4,800	\$7,254
Funding Partner	Cash	In-kind	Total
NRCan-CFS (core)	\$2,500	-	\$2,500
Working Group members (13 organizations)	-	\$4,800	\$4,800
Total	\$2,500	\$4,800	\$7,300

Outputs:

- Program/Project Planning Documents
- Working Group Budget
- PowerPoint presentations related to specific projects under the Working Group

Other Project Partners: Working Group members, representing 13 organizations. These include Brokenhead Ojibway Nation, MB Conservation, Tembec, Time to Respect Earth's Ecosystems (TREE), Universities of Manitoba and Winnipeg, Manitoba Trapper's Association, Black River First Nation, Hollow Water First Nation, MB Hydro, Mining Association of Manitoba, Louisiana Pacific, Manitoba Metis Federation, Community of Seymourville, and Ducks Unlimited.

Project Title: Caribou Management Project Number: 07-2-33 Theme Area: Integrated Landscape Management Project Leader: Dennis Brannen, Manitoba Conservation Project Status: On-going, Year 1 of 5	2007-08
--	---------

Purpose: To maintain self-sustaining populations of woodland caribou within and beyond the MBMF area in eastern Manitoba by determining habitat use/availability and determining factors that influence caribou survival. This work will support the development of Recovery Action Plans under the Species at Risk Act.

Report: The Eastern Manitoba Woodland Caribou Advisory Committee (EMWCAC), a committee of the MBMF has been active in research, and monitoring of woodland caribou, and the development and implementation of caribou management strategies for the last 15 years. The EMWCAC is a multi-stakeholder committee comprised of representatives from First Nation communities, the forest industry, government and local and provincial stakeholder organizations. Through this program, the knowledge and understanding of Woodland Caribou requirements in eastern Manitoba has been significantly advanced, and the EMWCAC has been recognized by Manitoba Conservation as an advisory body that provides input on resource management decisions that may effect Woodland Caribou. Committee activities and recommendations have influenced industry and government management decisions on the landscape, particularly with respect to forestry, access development and road retirement. The Committee's work has also resulted in immediate protection to woodland caribou through modifications in timber harvest design and the extent of harvesting within the Owl Lake woodland caribou herd's range.

Activities undertaken during the first 6 months of the FCP include:

- 6 meetings of the EMWCAC and its sub-committees (Science & Technology, Education, Data Management) were held. Minutes were generated for each meeting.
- One member of the EMWCAC attended a 2 day training session in Toronto on conducting risk assessments for species listed under the Species at Risk Act
- A two day workshop was then held by the EMWCAC to conduct a risk assessment for caribou of the Owl Lake, Bloodvien and Atiko herds. The risk assessment will be used to develop a conservation strategy for the Atiko and Bloodvein caribou ranges
- One member of the EMWCAC presented a summary of EMWCAC research at the National Boreal Caribou conference in Toronto (Nov/07)
- A proposal was developed and submitted for funding to study wolf/caribou/moose interactions in the Owl Lake caribou range (the proposal was successful). 2 GPS and 4 VHF collars were subsequently placed on wolves in the MBMF area during the winter as part of this graduate student project.
- All historic caribou data along with resource maps (fire, vegetation, logging, roads, soils, etc.) were compiled into a resource binder in preparation for the development of a conservation strategy for the Atiko/Bloodvein caribou ranges
- The development of the Atiko/Bloodvein caribou range conservation plan was initiated
- GPS and VHF collars were purchased/refurbished for monitoring of caribou response to experimental harvest prescriptions in the Owl Lake range
- Deployment of collars on woodland caribou was completed through a contract to capture company. A total of 24 caribou were captured and fitted with GPS or VHF collars in the winter. Data from existing collars were downloaded.
- Regular aerial telemetry flights to collect location data of caribou were undertaken (in

- Experimental Harvest Area and in broader region) to better understand landscape/habitat use
- Recruitment and survival surveys of woodland caribou in the Owl Lake range were undertaken
- A multi-species (moose, caribou, wolves, deer, etc.) track survey was conducted
- An aerial survey was conducted to assess wolf distribution
- Data analysis (GPS/VHF data, habitat use, core use areas, etc.) was initiated
- A draft report on habitat patch analysis for caribou in the MBMF area was developed. A final report, following review of by the EMWCAC, will be posted on the MBMF website.
- An assessment of the implications of the new Tembec 20 year forest management plan on woodland caribou was initiated
- A proposal was submitted to the Habitat Stewardship Program to initiate a project on the identification of caribou calving areas in the Owl Lake caribou range. The proposal was successful, with work to begin in the 2008-09 fiscal year.
- A presentation on the EMWCAC and caribou management was made at the Manitoba Parks and Protected Areas Research Forum

Note: While project expenditures exceeded project contributions during the first 6 months of the FCP, additional funding was received by the MBMF prior to the start of the FCP, resulting in a surplus of non-FCP funding that was carried over to the subsequent fiscal year.

Project Expenditures and Contributions:

Project Expenditures	Cash	In-kind	Total
Administration	-	-	-
Project Activities	\$154,921	\$136,250	\$291,171
Total	\$154,921	\$136,250	\$291,171
Funding Partner	Cash	In-kind	Total
NRCan-CFS (core)	10,000	-	\$10,000
MB Conservation	\$49,300	\$125,500	\$174,800
MB Hydro	\$25,000	\$750	\$25,750
Species Conservation Fund	\$27,500	-	\$27,500
Tembec	\$10,000	\$5,500	\$15,500
MB Habitat Heritage Corp	\$1,279	-	\$1,279
Sustainable Development Innovations Fund	\$25,000	-	\$25,000
Eco Action	\$580		
First Nation communities	-	\$1,050	\$1,050
Other partners (5 organizations)	-	\$3,450	\$3,450
Total	\$148,659	\$136,250	\$284,909

Outputs:

- Meeting minutes, budgets, project presentations
- Database on distribution and population status of various woodland caribou ranges in eastern Manitoba
- 24 GPS/VHF collars deployed on caribou and 6 GPS/VHF collars deployed on wolves
- Initial assessment of Owl Lake woodland caribou response to timber harvest in Experimental Harvest Area (report to be completed in F2008/09)
- Initial recruitment and survival survey data analysis (report to be completed in F2008/09)
- Initial data synthesis of multi-species and wolf aerial survey flights (reports to be completed in F2008/09)

- Creation of a resource (information) binder for EMWCAC members, containing information necessary to develop draft management strategy for Atiko and Bloodvein woodland caribou ranges
- Draft report on habitat patch analysis for caribou in the MBMF area
- A peer-reviewed paper on the effects of all-weather logging roads on caribou in eastern Manitoba was published in the journal “Rangifer”. The paper is based on research conducted by the EMWCAC

Other Project Partners: Time to Respect Earth’s Ecosystems (TREE), University of Winnipeg, Lac du Bonnet Fish & Wildlife Association, Mining Association of Manitoba, Manitoba Highways.

Project Title: Natural Disturbance Regime Project Number: 07-2-49 Theme Area: Integrated Landscape Management Project Leader: Dr. James Ehnes, EcoStem Project Status: Year 1 of 2 (final year to occur in Year 5 of FCP)	2007-08
--	---------

Purpose: To re-measure aspects of permanent samples plots established under an experimental natural disturbance-based timber harvesting template, as well as in benchmark burned landscapes.

Report: The Natural Disturbance Regime project began in 1998 as a way to enhance the ecological sustainability of timber harvesting. The project conducted research on wildfire behavior and forest recovery in the eastern two-thirds of the Tembec FML# 1 and then developed harvest guidelines to approximate large wildfire disturbance at site, stand and landscape spatial scales. Harvest guidelines were published and then tested with operational trials from 1999 to 2001. Monitoring and other follow-up research was conducted from 1999 to 2004. Note: field work activities under this project were completed in the summer of 2007, just prior to the start of the FCP. Data analysis and the development of a project report which assesses the short-term effectiveness of the natural disturbance-based guidelines will be completed in the second year of the FCP.

In the summer of 2007, the following activities occurred:

- 95 permanent sample plots in the Wildfire, Winter Harvest 1999, Summer Harvest 2000 and Summer Harvest 2001 study areas were re-measured.
- In addition to the attributes measured in previous years, the height growth of jack pine and black spruce were recorded
- The three harvest areas were traversed by foot and photos were taken of standing retention trees and large snags.
- Field data collected during the 2007 field season was entered. These data received the first two rounds of checks. The third round of data checks occurs during data analysis.
- Mapping of residual trees and large snags in the three harvest trial areas was initiated using ground photos taken during the 2007 field season.

Note: cash funding for this project provided by Tembec was received before start of the FCP program, and thus, is not shown in the table below. There was a surplus of \$10,000 carried over to the next fiscal year. In-kind contributions are shown below.

Project Expenditures and Contributions:			
Project Expenditures	Cash	In-kind	Total
Administration	-	-	-
Project Activities	\$15,000	\$24,000	\$39,000
Total	\$15,000	\$24,000	\$39,000
Funding Partner	Cash	In-kind	Total
MBMF	-	-	-
Tembec	-	\$5,000	\$5,000
Manitoba Conservation	-	\$4,000	\$4,000
Sustainable Development Innovations Fund	\$7,500	-	\$7,500

EcoStem	-	\$15,000	\$15,000
Total	\$7,500	\$24,000	\$31,500
Outputs:			
<ul style="list-style-type: none"> ▪ Interim Report on field activities and data collection 			
Other Project Partners: None			

Project Title: Brokenhead River Water Quality Project Number: 07-2-63 Theme Area: Integrated Landscape Management Project Leader: Brian Kotak, Miette Environmental Project Status: Year 1 of 1	2007-08
--	---------

Purpose: To monitor the current water quality in the Brokenhead River, in collaboration with Brokenhead Ojibway Nation, and to assess the influence of land use (agriculture, forestry, roads) on water quality in the Brokenhead River watershed

Report: This is a collaborative pilot project between the MBMF and Brokenhead Ojibway Nation. The Brokenhead River flows through the traditional territory of Brokenhead Ojibway Nation, and many community members are concerned about the current status of water quality in the river. The community believes that water quality has suffered due to agricultural activities occurring upstream in the watershed. The project combines water quality data collection along the length of the river throughout the watershed, training of Brokenhead Ojibway Nation youth in water quality sampling, and a GIS-based assessment of the impacts of land use practices on water quality.

Activities undertaken in the summer of 2007, and also within the first six months of the FCP include:

- Water quality sampling of the Brokenhead River at 6 locations from near its headwaters in southern Manitoba to near its terminus near Lake Winnipeg. This occurred on 3 occasions.
- Analyzed water samples for a variety of water quality parameters
- Involved and provided water quality monitoring training to youth from Brokenhead Ojibway Nation. Six youth were involved.
- A training session was held with students from Springfield Collegiate on how to conduct riparian forest health assessments and the students then conducted an assessment in the riparian forests located in the Brokenhead River Ecological Reserve.
- An interim project report was developed.
- GIS analysis and a full technical report exploring the effects of land use practices on water quality in the Brokenhead River will be produced in Fiscal 2008-09.

Note: cash funding for this project, provided by Manitoba Hydro was received prior to the FCP program, and is not shown in the table below. There was a slight surplus (\$1,411) of funding carried over to the next fiscal year.

Project Expenditures and Contributions:			
Project Expenditures	Cash	In-kind	Total
Administration	-	-	-
Project Activities	\$10,350	\$17,300	\$27,650
Total	\$10,350	\$17,300	\$27,650
Funding Partner	Cash	In-kind	Total
MBMF	\$8,750	-	\$8,750
Sustainable Development Innovations Fund	\$820	-	\$820
Manitoba Water Stewardship	-	\$2,000	\$2,000
Brokenhead Ojibway Nation	-	\$800	\$800
DFO	-	\$500	\$500

Brokenhead River Restoration Committee	-	\$1,000	\$1,000
Sunrise School Division	-	\$2,000	\$2,000
Miette Environmental	-	\$11,000	\$11,000
Total	\$9,750	\$17,300	\$26,870
Outputs:			
<ul style="list-style-type: none"> ▪ Water quality data for 6 locations along the Brokenhead River ▪ Training of 6 Brokenhead Ojibway Nation youth in water quality assessment ▪ Involvement of 20 high school students from Springfield Collegiate in riparian forest health assessments ▪ Riparian forest health assessments in the Brokenhead River Ecological Reserve 			
Other Project Partners: None			

Project Title: Watershed Management Tools Project Number: 07-2-66 Theme Area: Integrated Landscape Management Project Leader: Brian Kotak, Miette Environmental Project Status: On-going, Year 1 of 5	2007-08
--	---------

Purpose: To assess the impacts of watershed features and disturbance regimes (fire, logging, agriculture) on water quality in the MBMF area in order to support the development of watershed management tools.

Description: This monitoring program is developing a baseline of data on stream hydrology (flow) and water quality in the Model Forest area, information that is currently lacking. The information will also be used to develop watershed planning tools that can be utilized by Tembec to more fully incorporate water quality objectives into their forest management planning process. Ultimately, the utility of the watershed planning tools will be assessed through a watershed-scale harvesting experiment in the Tembec Forest Management License area. Activities under this project were initiated in the summer of 2007, prior to the start of the FCP.

Activities that occurred in the summer of 2007 and the first six months of the FCP include:

- Water quality and hydrology data were collected once per month from May to August, 2007 on the O’Hanly, Black, Manigotagan and Wanipigow rivers
- Data were combined with water quality and hydrology data from 2004-2007
- A statistical analysis to examine the influence of watershed features, climate and disturbance (fire, timber harvesting) on water quality was initiated. This will be completed in the next fiscal year and will form the basis for the development of watershed management tools
- Preliminary results were presented at an international watershed management conference in Orlando, Florida
- Meetings were held with Tembec to select watersheds for the implementation of a new experimental watershed harvesting experiment

Project Expenditures and Contributions:

Project Expenditures	Cash	In-kind	Total
Administration	-	-	-
Project Activities	\$25,000	\$15,500	\$40,500
Total	\$25,000	\$15,500	\$40,500

Funding Partner	Cash	In-kind	Total
MBMF	-	-	-
Manitoba Conservation	\$25,000	\$500	\$25,500
Tembec	-	\$3,500	\$3,500
Manitoba Water Stewardship	-	\$500	\$500
Miette Environmental	-	\$11,000	\$11,000
Total	\$25,000	\$15,500	\$40,500

Outputs:

- Water quality data on a suite of important rivers in eastern Manitoba
- Data analysis summarizing 4 years of water quality data
- Draft report on water quality
- Identification of watersheds for watershed-scale timber harvesting experiment

Other Project Partners: None

Project Title: Terrestrial Biomonitoring Project Number: 07-2-06 Theme Area: Integrated Landscape Management Project Leader: Brian Kotak, Miette Environmental Project Status: On-going, Year 1 of 5	2007-08
<p>Purpose: To establish long-term forest monitoring plots in the MBMF area and in urban forests in order to track changes in forest health, data which contributes to a national database through the Ecological Monitoring and Assessment Network. Additionally, to involve high school students in environmental monitoring.</p>	
<p>Description: Since 2004, a regional terrestrial bio-monitoring program was implemented by the MBMF to examine the potential impact of climate change on forest ecosystem parameters in the boreal forest and also in urban forests in the City of Winnipeg. Since 2005, study plots have been established using Environment Canada’s Ecological Monitoring and Assessment Network (EMAN) national monitoring protocols. The program forged partnerships with 3 high schools in the MBMF region (Wanipigow, Powerview and Lac du Bonnet) and schools in Winnipeg. With the aid of part-time researchers and the Model Forest Education Coordinator, the science classes from the schools participated in the collection of environmental data in forests of different ages and origin (e.g., logged, fire). Field trips to locations in the Model Forest area and in Winnipeg allowed students to gain hands on experience in collecting data on climate, soils, vegetation and small mammal diversity and abundance. Field trips typically occurred in May/June and September/October of each year.</p>	
<p>In 2007, we not only continued to establish more study plots in the MBMF area and in Winnipeg using EMAN monitoring protocols, but also established plots in the MBMF to specifically examine the long-term ecological consequences of establishing treed riparian buffer strips following timber harvesting operations. While the use of forested buffer strips in forest management is thought to protect aquatic values (water quality, fish and fish habitat) and terrestrial values (riparian habitats), the long-term fate of these “ribbons” of trees along waterways has not been investigated. In addition, we began to establish study plots in a new protected area (Bois des Esprit) located in the City of Winnipeg, and included a new high school partnership with Scolare Leo Remillard.</p>	
<p>Activities that occurred in the summer of 2007 and during the first six months of the FCP included:</p> <ul style="list-style-type: none"> ▪ Establishment of riparian study plots (line transects) in the boreal forests of the MBMF and an assessment of forest health and blowdown in forested buffer strips ▪ Establishment and monitoring of EMAN-type monitoring plots in buffer strips around lakes in the MBMF area ▪ Establishment of EMAN-type monitoring plots in the Boise des Esprit, in the City of Winnipeg. Completion of the establishment of EMAN-type monitoring plots in the Assiniboine Forest, in the City of Winnipeg ▪ Providing training on the establishment and monitoring of EMAN-type monitoring plots to employees of the City of Winnipeg, members of the ENGO Save our Seine (which flows through the Bois des Esprit in Winnipeg) and other NGOs ▪ Involvement of high school students from Wanipigow School (located in the MBMF area) and Scolare Leo Remillard (Winnipeg) in the establishment and monitoring of study plots ▪ Analysis of plot data. ▪ Production of a project report ▪ Uploading of all data to the EMAN website 	

Note: There was a surplus of non-FCP funds that was carried over to the next fiscal year.

Project Expenditures and Contributions:

Project Expenditures	Cash	In-kind	Total
Administration	-	-	-
Project Activities	\$37,066	\$14,000	\$51,066
Total	\$37,066	\$14,000	\$51,066
Funding Partner			
Funding Partner	Cash	In-kind	Total
MBMF	-	-	-
Manitoba Hydro	\$7,501	-	-
Environment Canada	\$12,000	-	-
Manitoba Conservation	\$25,000	\$500	\$25,500
Tembec	-	\$1,000	\$1,000
Northeast Sustainable Development Assoc	-	\$500	\$500
Scolare Leo Remillard	-	\$500	\$500
Frontier School Division	-	\$500	\$500
Save Our Seine	-	\$1,000	\$1,000
City of Winnipeg	-	\$1,000	\$1,000
Miette Environmental	-	\$9,000	\$9,000
Total	\$44,501	\$14,000	\$58,501

Outputs:

- Establishment of 10 long-term EMAN-type monitoring plots and 93 line transects in riparian forests surrounding lakes in eastern Manitoba. Completion of establishment of 10 EMAN plots in the Assiniboine Forest in Winnipeg. Initial establishment of a EMAN plot in the Bois des Esprit (Winnipeg)
- Report covering the initial evaluation of the effects of isolation of riparian forests following timber harvest, and a baseline assessment of forest health and condition in various areas of the MBMF region and in Winnipeg
- Training program for forest monitoring for NGOs in Winnipeg. Ten people attended.
- Presentation to Save Our Seine (at their annual general meeting)
- Involvement of 4 schools (70 students) in forest bio-monitoring program

Other Project Partners: Lac du Bonnet Senior School, Wanipigow School, Powerview School

Project Title: Species of Special Interest Project Number: 07-2-26 Theme Area: Integrated Landscape Management Project Leader: Vince Keenan, Tembec Project Status: On-going, Year 1 of 5	2007-08
--	---------

Purpose: To identify plants of special interest (e.g., medicinal plants) to MBMF area First Nation communities, and to assist forest management planning by developing simple tools to predict the potential locations/habitats of such plants across the MBMF landscape.

Description: MBMF area First Nations actively use the forests in their traditional territories for numerous activities, including hunting and gathering. In particular, the gathering and use of medicinal plants plays a critical role in their culture and well-being. Forest management planning rarely incorporates such values due to the lack of information/data available from each community. This pilot project will involve First Nation communities to identify plants of interest, identify locations where these plants occur (if desired by each community) and the habitats where they occur.

- There was no activity in this project during the first 6 months of the FCP. Funding (\$5,000), received from Tembec, will be carried forward to the next fiscal year for this project.

Project Expenditures and Contributions:

Project Expenditures	Cash	In-kind	Total
Administration	-	-	-
Project Activities	-	-	-
Total	-	-	-
Funding Partner	Cash	In-kind	Total
Tembec Enterprises Inc.	5,000	-	\$5,000
Total	\$5,000	-	\$5,000

Outputs:

- None during the first six months of the FCP

Other Project Partners: Hollow Water First Nation, Black River First Nation, Sagkeeng First Nation, Brokenhead Ojibway Nation

Project Title: Education Working Group Support Project Number: 07-4-10 Theme Area: Education Project Leader: Rod Bollman, RM of Victoria Beach, Jennifer Lidgett, Tembec Enterprises Inc. Project Status: On-going, Year 1 of 5	2007-08
--	---------

Purpose: To provide for travel and support for the Education Working Group meetings

Report: The Education Working Group meets periodically to develop work plans and track progress of on-going projects under the working group's direction (i.e., under the theme area of the same name). Funding is used to pay for costs associated with Working Group meetings including mileage, meals, room rentals and travel of working group members to other relevant meetings and/or conferences

- During the first six months of the FCP, the Working Group met three times, on October 10, 2007, January 7, 2008 and February 4, 2008. The Work Group discussed the prioritization of projects for the F2007-08 work plan year and reviewed the status of current education projects.
- Funding from the Education Working Group was also used to send two working group members to the Forest Ed West conference in Kelowna, BC. Presentations were made at the conference on MBMF education initiatives. Several education ideas obtained at the conference have subsequently been initiated by the MBMF and the Manitoba Forestry Association.
- There was a small surplus (\$17) of FCP funding.

Project Expenditures and Contributions:

Project Expenditures	Cash	In-kind	Total
Administration	-	-	-
Project Activities	\$1,483	\$8,700	\$10,183
Total	\$1,483	\$8,700	\$10,183

Funding Partner	Cash	In-kind	Total
NRCan-CFS (core)	\$1,500	-	\$1,500
Working Group members (15 organizations)	-	\$8,700	\$8,700
Total	\$1,500	\$8,700	\$10,200

Outputs:

- Program/Project Planning Documents. Meeting minutes
- Working Group Budgets
- PowerPoint presentations related to specific projects under the Working Group
- Attendance and presentations at the Forest Ed West conference in Kelowna, BC

Other Project Partners: Working Group members, representing 15 organizations. These include Brokenhead Ojibway Nation, MB Conservation, Tembec, Woodlot Association of Manitoba, Manitoba Forestry Association, Northeast Sustainable Development Association, RM of Victoria Beach, Manitoba Trapper's Association, Black River First Nation, Hollow Water First Nation, Sagkeeng First Nation, Winnipeg River Learning Centre, MB Hydro, Manitoba Metis Association, and Louisiana Pacific.

Project Title: Winnipeg River Learning Centre Project Number: 07-4-07 Theme Area: Education Project Leader: Gary Enns, Manager of Winnipeg River Learning Centre. Project Status: On-going, Year 1 of 5	2007-08
--	---------

Purpose: To support the start up and program development of the Winnipeg River Learning Centre

Report: The Winnipeg River Learning Centre is a project of the Winnipeg River Regional Round Table (WRRRT). The Manitoba Model Forrest (MBMF) is a member of the WRRRT, and has provided the initial seed funding that has made it possible to hire a WRLC Manager. The Winnipeg River Learning Centre (WRLC) Trades School idea grew out of a 2004 priority setting exercise of the WRRRT, and from a regional training needs assessment underwritten by Little Black River First Nation in 2005. Surveys conducted in each First Nation (and non-First Nation) communities in the region, as well as major businesses (MB Hydro, Tembec, mining, etc.) documented the keen interest and need for a regional trades school. The WRRRT completed a comprehensive feasibility study in June of 2007, building on the regional interest in post-secondary education and trades training. The Sunrise School Division is providing use of its recently decommissioned Pine Falls Public School as home to the WRLC. The start up of the WRLC represents a significant step forward in the training and diversification of economic opportunities in the entire region. The first six months of the FCP involved many meetings with potential partners, the official launch of the WRLC, and the first offering of programs in the Learning Centre.

Activities undertaken during the first 6 months of the FCP include:

- Developing partnerships with Winnipeg River Community Futures, North Eastman Regional Health Authority, Sunrise School Division, J.U.S.T. Training, Empower Training, Red River College, Assiniboine Community College, Tembec and Manitoba Hydro
- Development of fund-raising proposals and presentations
- Public relations, promotions, consultations, and presentations
- Establishment of a Winnipeg River Learning Centre Advisory Board
- Several courses and programs were offered, including:
 - Red River College Health Care Aid Certificate Program
 - Red River College Business, Accounting and Management Certificate Program
 - Quick Books Accounting
- Planning began for the remainder of the 2008 course year. Programs under development include
 - Para-Educator Certificate
 - Health Care Aid Certificate
 - Book Keeping and Small Business Office Certificate
 - Human Resource Management Certificate
 - Non-timber Forest Products
 - Canadian Firearms Safety
 - Land and Water Stewardship Certificate
 - Various computer courses
- Pre-employment training workshops were developed in collaboration with RRC and with Manitoba Hydro
- Marketing and promotional strategies and materials were developed to recruit students

Funding during the first six months of the FCP was used primarily to hire a manager for the WRLC.

The manager was responsible for the majority of tasks and activities identified above.

Project Expenditures and Contributions:

Project Expenditures	Cash	In-kind	Total
Administration	-	-	-
Project Activities	\$25,000		
Total	\$25,000		
Funding Partner	Cash	In-kind	Total
Manitoba Hydro	\$25,000	\$2,000	\$27,000
Other partners listed below	-	\$100,000	\$100,000
Total	\$25,000	\$102,000	\$127,000

Outputs:

- New partnerships for the initiative
- Funding proposals. A funding proposal by the WRLC to the Whiteshell Community Adjustment Fund was successful (\$85,000)
- Promotional materials
- Winnipeg River Learning Centre Advisory Board was established
- Start up of the WRLC, including the first offerings of courses
- Pre-employment training workshops
- Marketing and Promotions Strategy
- Draft long-term program plan

Other Project Partners: Project members, representing 28 organizations. These include Brokenhead Ojibway Nation, MB Conservation, Tembec, RM of Alexander, RM of Brokenhead, RM of Reynolds, RM of Whitemouth, RM of Springfield, RM of St. Clements, Red River Community College, Town of Powerview-Pine Falls, Town of Beausejour, Sunrise School Division, Manitoba Education and Training, Community of Manigotagan, Community of Seymourville, Winnipeg River Regional Round Table, RM Lac du Bonnet, Town of Lac du Bonnet, LGD of Pinawa, Town of Bisset, Manitoba Trapper's Association, Black River First Nation, Hollow Water First Nation, Sagkeeng First Nation, MB Hydro, and Manitoba Metis Association.

Project Title: Junior Rangers Project Number: 07-4-08 Theme Area: Education Project Leader: Bob Austman, Education Coordinator Consultant Project Status: On-going, Year 1 of 5	2007-08
--	---------

Purpose: To provide hands-on training regarding natural resource management to MBMF area students (both First Nation and non-First Nation) through the development of a field-oriented training program

Report: A Junior Ranger program has been offered twice in the MBMF area over the last decade. The program offered training opportunities for students in many facets of natural resource management. However, no central agency was responsible for the program, and as a result, there has been several years in which the program has not been offered. The MBMF will act as the manager for this important training program and will implement the Junior Ranger program in 2008 in eastern Manitoba. In future years, we will examine the possibility of expanding the program to other parts of the province.

The first six months of the FCP represented a planning period for the Junior Ranger program.

Activities included:

- Assessment of the necessary upgrades to the Wallace Lake camp
- Development of program planning for the summer 2008 Junior Rangers program
- Development of funding proposals for the summer 2008 program
- Identification of training delivery groups/individuals and establishing the exact program schedule
- Meetings with MBMF area First Nation schools and communities regarding the up-coming program. Meeting with MBMF non-First Nation schools and communities
- Advertising camp positions (camp foreman, cooks, etc) and initiating the hiring process
- Securing funding required to offer the Junior Rangers program in 2008
- Attendance at a national Junior Ranger meeting convened by the Canadian Model Forest Network, and hosted by the Prince Albert Model Forest in March, 2008.

The above activities were completed by a combination of volunteers who sit on the MBMF Junior Rangers program committee, as well as the contracted services of an Educational Consultant and Community Engagement Consultant.

As project costs were substantially less than revenue during the first six months of the FCP, approximately \$10,800 was carried over to the next fiscal year for this project. All FCP funds were spent during the first 6 months of the FCP.

Project Expenditures and Contributions:			
Project Expenditures	Cash	In-kind	Total
Administration	-	-	-
Project Activities	\$6,734	\$6,500	\$13,234
Total	\$6,734	\$6,500	\$13,234
Funding Partner	Cash	In-kind	Total
NRCan-CFS (core)	\$5,000	-	\$5,000
Manitoba Hydro	\$2,500	\$1,000	\$3,500

Tembec Enterprises Inc	\$2,500	\$2,000	\$4,500
Louisiana-Pacific	\$7,500	\$500	\$8,000
Manitoba Trapper's Association	-	\$1,000	\$1,000
Black River First Nation	-	\$500	\$500
Hollow Water First Nation	-	\$500	\$500
Brokenhead Ojibway Nation	-	\$500	\$500
Sagkeeng First Nation	-	\$500	\$500
Total	\$17,500	\$6,500	\$24,000

Outputs:

- Program planning meetings and meeting minutes, including meetings with individual communities
- Meetings with potential funders for the 2008 program year
- Preliminary program budget for 2008
- Preliminary 2008 summer program schedule
- Presentation on the previous MBMF Junior Ranger program at the CMFN National Junior Ranger workshop in Prince Albert

Other Project Partners: None

Project Title: Provincial Natural Resource Management Curricula Project Number: 07-4-14 Theme Area: Education Project Leader: Bob Austman, Education Coordinator Consultant Project Status: On-going, Year 1 of 5	2007-08
--	---------

Purpose: To develop provincially-accredited curricula on subjects related to boreal forest ecosystems and natural resource management

Report: In Phase III of the Model Forest Program, the MBMF developed two provincially-accredited textbook supplements on Sustainable Forest Ecosystems, one for Grade 7 Curriculum and one for Grade 10 Curriculum. The curriculum meets all the teaching outcomes mandated by the Province of Manitoba. Printed copies are provided to all teachers in Manitoba free of charge, and the documents are also one of the most frequently downloaded MBMF publications. Also in Phase III, the MBMF developed a curricula on Woodland Caribou which has now been piloted in several schools in Manitoba, and training has been offered to all Manitoba teachers through the Province’s annual Special Area Groups (SAG) conferences.

Activities for 2007/08 will include:

- An assessment of Early Years Science Curriculum was completed to determine the “best fit” for the development of future educational materials
- MBMF Education Coordinator held a workshop with University of Winnipeg education student teachers on use of the MBMF woodland caribou curriculum
- Creation of woodland caribou poster for schools
- Presentation on MBMF curricula (including Grade 7 curriculum and woodland caribou curriculum) at EECOM conference, provincial Special Area Group (SAG) in-service (province-wide science teacher in-service) and at the Forest Ed West conference in Kelowna, BC in January, 2008

Funding in this project was used primarily for the contract services of an educational consultant and to support the travel of the Educational Consultant and the co-chair of the Education Working Group to the Forest Ed West conference in Kelowna, BC.

As project expenditures were substantially lower than revenue during the first six months of the FCP, approximately \$12,300 of non-FCP funding was carried over to the next fiscal year.

Project Expenditures and Contributions:

Project Expenditures	Cash	In-kind	Total
Administration	-	-	-
Project Activities	\$7,635	\$6,000	\$13,635
Total	\$7,635	\$6,000	\$13,635
Funding Partner	Cash	In-kind	Total
NRCan-CFS (core)	\$5,000	-	\$5,000
Manitoba Hydro	\$10,000	\$1,000	\$11,000
Louisiana Pacific	\$5,000	\$1,000	\$6,000
Manitoba Education, Citizenship, and Youth	-	\$1,000	\$1,000
Tembec Enterprises Inc	-	\$1,000	\$1,000

Science Teacher's Association of Manitoba	-	\$1,000	\$1,000
University of Winnipeg	-	\$1,000	\$1,000
Total	\$20,000	\$6,000	\$26,000
Outputs:			
<ul style="list-style-type: none"> ▪ Curriculum assessment for Early Years Science ▪ Workshop presentations to students in Faculty of Education for University of Winnipeg ▪ Caribou poster for schools ▪ Presentations on MBMF curricula at schools, provincial SAG conference and Forest Ed West conference 			
Other Project Partners: None			

Project Title: Woodlot Education Project Number: 07-4-09 Theme Area: Education Project Leader: Ken Fosty Project Status: On-going, Year 1 of 5	2007-08
---	---------

Purpose: To improve environmental sustainability of private woodlots by providing educational programming to woodlot owners

Report: During Phase III of the Model Forest Program, the MBMF partnered with the Manitoba Forestry Association (MFA) and the Woodlot Association of Manitoba on a number of private woodlot education initiatives. These included the development of a provincial database to track woodlot management activities, development and implementation of standardized woodlot management plans, a woodlot best practices manual, the creation of demonstration woodlots and an land owner education program. In the first six months of the new Forest Communities Program, the MBMF supported a tree planting workshop hosted by the Manitoba Forestry Association.

Activities for the first six months of the FCP included:

- Organizing and implementing an indoor hands-on proper tree planting workshop. This workshop taught landowners and woodlot owners proper planting techniques, seedling sources, common planting errors, proper transplanting/timing, site preparation, and vegetation management. The workshop also addressed planting strategies in riparian zones, shelterbelts, livestock (agroforestry), farmyard, wildlife, and landscape planting
- Meetings were held with the Manitoba Forestry Association to discuss future woodlot education initiatives that the MBMF may participate in with the MFA
- An article was written on Ecoforestry in the Journal of Private Land Forestry in Manitoba (authored by MBMF Education Coordinator)

Project Expenditures and Contributions:

Project Expenditures	Cash	In-kind	Total
Administration	-	-	-
Project Activities	\$2,500	\$3,300	\$5,800
Total	\$2,500	\$3,300	\$5,800
Funding Partner	Cash	In-kind	Total
NRCan-CFS (core)	\$2,500	-	\$2,500
Manitoba Forestry Association – Woodlot Program		\$1,000	\$1,000
Manitoba Christmas Tree Grower’s Association		\$300	\$300
Woodlot Association of Manitoba		\$500	\$500
Manitoba Conservation – Forestry Branch		\$250	\$250
MBMF		\$750	\$750
Cook’s Creek Cons District		\$500	\$500
Total	\$2,500	\$3,300	\$5,800

Outputs:

- Regional Workshop involving local woodlot owners/farmers/landowners
- Handout information on tree planting, tree diseases, tree maintenance

- Final Report on the day

Other Project Partners: None

Project Title: Education for Sustainable Development Project Number: 07-4-13 Theme Area: Education Project Leader: Bob Austman, Education Coordinator Consultant Project Status: On-going, Year 1 of 5	2007-08
---	---------

Purpose:

Report: Over the last 5 years, the MBMF has developed numerous initiatives surrounding the education of students, teachers and the general public with respect to natural resource management. This has included delivery of workshops, presentations, educational materials, hosting field trips, creation of educational DVDs, and contributing to the development of educational components of other MBMF projects (e.g., woodland caribou, forest bio-monitoring). These activities have been led by our Education Coordinator, with the assistance of numerous partnering organizations. The objective of this project is to provide educational opportunities and experiences to a wide diversity of target audiences across Manitoba.

Activities during the first six months of the FCP included:

- Planning meetings for the Envirothon program (hosted in Pinawa – a MBMF community, in the spring of 2008). The MBMF Education Coordinator was on the planning committee. The Envirothon was led by the Manitoba Forestry Association. Planning meetings were held each month from October to March of the first six months of the FCP. Planning for the 2008 Envirothon was a major undertaking in the first six months of the FCP.
- Bio-monitoring field trips for grades 10-12 students from Powerview, Lac du Bonnet, Wanipigow and Leo Remillard schools in October, 2007
- Several meetings were also held throughout the first six months of the FCP with MBMF area schools regarding their involvement in the Envirothon competition.
- Presentation on MBMF education initiatives at East Aboriginal Sustainable Tourism conference
- A presentation was made to a 4th year wildlife class at the University of Manitoba on November 13, 2007 on wildlife-related MBMF research
- Field tour of Tembec harvesting sites with University of Manitoba ecology class in February, 2008
- Planning for the 2008 Forest Ed program (a field training session for high school teachers which provides teachers with hands-on experience in boreal forest ecology and management. Ideas learned from the training session can then be taken back to the school and used in the classroom)

Funding for this project was used mainly to pay for the contract and travel expenses of an educational consultant.

Project Expenditures and Contributions:

Project Expenditures	Cash	In-kind	Total
Administration			
Project Activities	\$10,975	\$15,000	\$25,975
Total	\$10,975	\$15,000	\$25,975
Funding Partner	Cash	In-kind	Total
NRCan-CFS (core)	\$2,500	-	\$2,500

Manitoba Hydro	\$15,000	\$2,000	\$17,000
Tembec	-	\$5,000	\$5,000
Manitoba Forestry Association	-	\$5,000	\$5,000
Woodlot Association of Manitoba	-	\$1,000	\$1,000
Northeast Sustainable Development Assoc	-	\$1,000	\$1,000
Manitoba Trapper's Association	-	\$1,000	\$1,000
Total	\$17,500	\$15,000	\$33,500
Planned Outputs:			
<ul style="list-style-type: none"> ▪ Completion of programming for 2008 Envirothon and Forest Ed initiatives ▪ Involvement of high school students in MBMF bio-monitoring project ▪ Presentations on MBMF projects and initiatives to MBMF region schools and universities ▪ Forest management tours 			
Other Project Partners: None			

<p>Project Title: Development of Indigenous Ethno-tourism enterprises in Costa Rica Project Number: 07-6-01 Theme Area: International Programs Project Leader: Brian Kotak, General Manager of MBMF Project Status: On-going, Year 1 of 5</p>	<p>2007-08</p>
<p>Purpose: To initiate an ethno-tourism project with the Nairi Awari communities of Costa Rica which focuses on providing eco-tourism and cultural education opportunities</p>	
<p>Description: During the last 12 months, Brokenhead Ojibway Nation and the MBMF initiated a project with the Reventazon Model Forest, the Regional Model Forest Network for Latin America and the Caribbean (LAC-Net) and Centro Agrinomico Tropical de Investigacion y Ensenanza (CATIE) on ethno-cultural tourism with the Nairi Awari (Indigenous) peoples of Costa Rica. To this end, a Concept Paper to the Indigenous Peoples Partnership Program of CIDA was submitted and approved for funding earlier in 2007. A delegation from the MBMF and Brokenhead Ojibway Nation traveled to Costa Rica in March, 2007 to meet with the project partners and Cabecares communities. During this initial phase of the project, a feasibility study was completed, as well as a gender equity assessment and environmental impact assessment. Subsequently, (during the first six months of the FCP) we have submitted a full proposal to CIDA for funding of a two year project that will focus on eco-tourism, non-timber forest products, land use planning and management of the Cabecares Reserve lands which is located next to La Amistad International Park (a World Heritage Site based on its exceptional biodiversity values), environmental education and monitoring. The Indigenous community is also located along the Pacuare River, one of the most acclaimed white water rafting rivers in the world. It is the desire of the community to establish an eco-tourism/ethno-tourism enterprise in which the community can provide tourism opportunities that highlight the natural tropical environment of their reserve, and the community's traditions and culture. The project will also provide opportunities for collaboration and exchange of ideas between the Nairi Awari peoples and Brokenhead Ojibway Nation (who have experience in eco-tourism, NTFPs, indigenous land use planning and cultural exchange).</p>	
<p>The following activities occurred during the first six months of the FCP:</p>	
<ul style="list-style-type: none"> ▪ A full proposal was developed and submitted in the fall of 2007 for funding under the CIDA Indigenous Peoples Partnership Program (the proposal was subsequently approved in June of 2008) ▪ MBMF General Manager and MBMF President undertook a mission to Costa Rica from March 5 to 17, 2008 to work with the project partners to develop a budget and timelines for tasks that could be completed while waiting for CIDA approval. While in Costa Rica, the MBMF delegation visited several important and sacred community sites and moved more than 1 tonne of river stone by hand to the site of a future cultural centre (the stone will be used for the floor). Meetings were also held in the community, the Reventazon Model Forest Board of Directors, staff from CATIE and the Iboamerican Network of the International Model Forest network to discuss the project in detail. A meeting was also held with most of the youth from the surrounding Nairi Awari communities. ▪ The community of Jameikari purchased a GPS and the MBMF provided training on the use of the GPS and mapping software ▪ MBMF provided seed funding to the community (through CATIE) of \$14,000 US to initiate the project. This funding was used to pay for local project meetings throughout 2007/08, purchase construction supplies for infrastructure, hiring local coordinators and for translation services ▪ During the first 6 months of the FCP, the Nairi Awari communities had phone service was installed in the community of Jameikari, a riverside cabin was constructed, and a riverside 	

cooking kitchen and rest area was upgraded.

The majority of the funding was used for local project activities within the Nairi Awari communities

Project Expenditures and Contributions:

Project Expenditures	Cash	In-kind	Total
Administration	-	-	-
Project Activities	\$16,608	\$55,000	\$71,608
Total	\$16,608	\$55,000	\$71,608
Funding Partner			
	Cash	In-kind	Total
NRCan-CFS (core funding)	\$15,000	-	\$15,000
MBMF	-	\$5,000	\$5,000
Brokenhead Ojibway Nation	\$1,316	\$10,000	\$11,316
Costa Rican partners (see list below)	-	\$40,000	\$40,000
Total	\$16,316	\$55,000	\$71,316

Outputs:

- Funding proposal submitted to CIDA under the IPP Program
- MBMF mission to Costa Rica and the Nairi Awari communities
- Community meetings to initiate the project
- Initiation of community infrastructure upgrades, including installation of phone service, development of a river-side cabin, upgrading of a kitchen facility and stock-piling of flat, river stones for the floor of the cultural centre. Over the next 2 years the following infrastructure will be developed: riverside cabins and cultural centre, upgrades to hiking trails, installation of solar power, waste water treatment, drinking water treatment, cell phone and internet service.
- Technology transfer relating to GPS training for the community of Jameikari

Other Project Partners: Asociación de Turismo Cultural Indígena Cabécar Jameikári (ATCICJ), Reventazon Model Forest, Tropical Agriculture Research and Higher Education Center (CATIE), UNDP – Costa Rica – Small Grants Program (UNDP-SGP)/ ACTUAR, Canadian International Development Agency (CIDA), Ministry of Environment and Energy (MINAE), National Commission on Indigenous Affairs (CONAI), National Institute of Apprenticeship (INA), Regional Model Forest Network for Latin America and the Caribbean (LAC-Net), communities of Nairi Awari.

Project Title: Communicatons Strategy Implementation Project Number: 07-7-01 Theme Area: Communications and Outreach Project Leader: Brian Kotak, General Manager of MBMF Project Status: On-going, Year 1 of 5	2007-08
--	---------

Purpose: To provide support for the implementation of the MBMF communications strategy

Report: Since its inception in 1992, the MBMF has developed, implemented and refined its communications, outreach and networking strategy to keep pace with changes in communications tools and technologies and the changing ways in which various target audiences can be best reached. Our strategy contains three main components: a) knowledge and technology transfer, b) communications and outreach, and c) networking. To achieve our strategy objectives, the MBMF periodically utilizes communications consultants who are responsible for developing and maintaining several of our communications tools including our website (www.manitobamodelforest.net), displays, newsletters and brochures, and our annual report. The content of written materials such as brochures and newsletters are commonly developed by individual project leaders, with formatting and editing done by the communications consultant. Target audiences include MBMF Board and committee members, MBMF communities, the research community, educators, environmental organizations, political organizations and decision-makers (e.g., Members of the Legislative Assembly, Members of Parliament, Political Parties, Municipal representatives), media, the Canadian Model Forest Network, our international project partners and the general public of Manitoba. Our strategy also includes assistance with communication efforts of both the Canadian Model Forest Network and the International Model Forest Network.

Activities undertaken in the first six months of the FCP included:

- Development of a new floor standing MBMF display
- Creation of a wooden brochure holder stand that sits in front of the floor standing display.
- Complete re-design and update of the MBMF website. Posting of new MBMF reports in pdf format to the website. New information relating to the FCP, including a description of the new program, pdf versions of the 5 year strategic plan, and annual work plans
- Digitizing all previous MBMF project reports and creation of a digital report database and library. The entire library is available on DVD.
- Creation of educational tools for school teachers, including a “stuffed tree” prop which allows elementary teachers to demonstrate the different layers of a tree
- Initiation of a tree identification picture book for the MBMF area

Project Expenditures and Contributions:

Project Expenditures	Cash	In-kind	Total
Administration	-	-	-
Project Activities	\$19,986	-	\$19,986
Total	\$19,986	-	\$19,986
Funding Partner	Cash	In-kind	Total
NRCan-CFS (core funding)	\$20,000	-	\$20,000
Total	\$20,000	-	\$20,000

Outputs:

- Floor standing display
- Brochure holder to complement the floor standing display

- Updated and re-designed website
- Digital library of MBMF publications
- Educational tools for use in teaching students about natural resources

Other Project Partners: None

Project Title: Communicatons Support Project Number: 07-7-02 Theme Area: Communications and Outreach Project Leader: Brian Kotak, General Manager of MBMF Project Status: On-going, Year 1 of 5	2007-08
--	---------

Purpose: To promote the activities, projects and accomplishments of the MBMF by supporting various vehicles for program promotion

Description: The MBMF utilizes various means and vehicles for promotion of our projects and programs, as well as promoting linkages with local, regional, provincial, national and international partners. The Communications Support program supports the hosting/co-sponsoring of workshops and conferences, attendance of non-MBMF staff at workshops and conferences, production of various communication tools and interaction among partners.

Activities undertaken in the first six months of the FCP include:

- Financial support of the MBMF-Sustainable Forest Management Network (SFMN) Landscape Design conference (held in Winnipeg in April/08)
- Hosting a field tour of the MBMF area and Tembec forest harvesting operations for the Canadian Model Forest network meeting in February, 2008.
- Production of 1,000 copies of the MBMF woodland caribou DVD titled Shadows of the Forest. The DVDs were provided to all First Nation schools in Manitoba, with the assistance of the Centre for Indigenous Environmental Resources
- Printing of the MBMF woodland caribou curriculum and donation of the curriculum to all First Nation schools in Manitoba
- Financial support for the Canadian Model Forest Network
- Purchase of MBMF promotional materials for hand out at events, conferences, workshops etc.

Project Expenditures and Contributions:

Project Expenditures	Cash	In-kind	Total
Administration	-	-	-
Project Activities	\$12,500	-	\$12,500
Total	\$12,500	-	\$12,500

Funding Partner	Cash	In-kind	Total
NRCan-CFS (core funding)	\$10,000	-	\$10,000
MBMF	\$2,500	-	\$2,500
Total	\$12,500	-	\$12,500

Outputs:

- Hosting of the MBMF-SFMN Landscape Design conference
- Hosting of forest tours
- Shadows for the Forest DVD and woodland caribou curriculum
- Distribution of the Shadows of the Forest DVD and woodland caribou curriculum to all First Nation schools in Manitoba
- Various promotional materials

Other Project Partners: None

3.0 Progress Towards Intended Outcomes

As part of the MBMF 5 Year Strategic Plan under the Forest Communities Program, the MBMF developed a Logic Model which describes how individual projects and activities support the attainment of short-term **Immediate Outcomes**, medium-term **Intermediate Outcomes**, and **Long-term Outcomes**. Immediate Outcomes are those results that are expected to be achieved in the first two years of the FCP, or within the first two years of the start of a particular project (for those projects starting part way through the FCP). Immediate Outcomes provide the foundation for the achievement of the Intermediate and Long-term Outcomes. In general, Intermediate Outcomes are expected to be realized within the latter part of the 5 year FCP and Long-term Outcomes are achieved by the end of the 5 year FCP and beyond.

The MBMF Logic Model, which describes the linkages between the 6 main Program/Theme Areas of the MBMF and the activities, outputs and outcomes is shown in Figure 1. A summary of how various projects and activities undertaken within the first months of the FCP contributed to the attainment of Immediate, Intermediate and Long-term Outcomes is provided below. Immediate Outcomes are structured around the six main program theme areas of the MBMF.

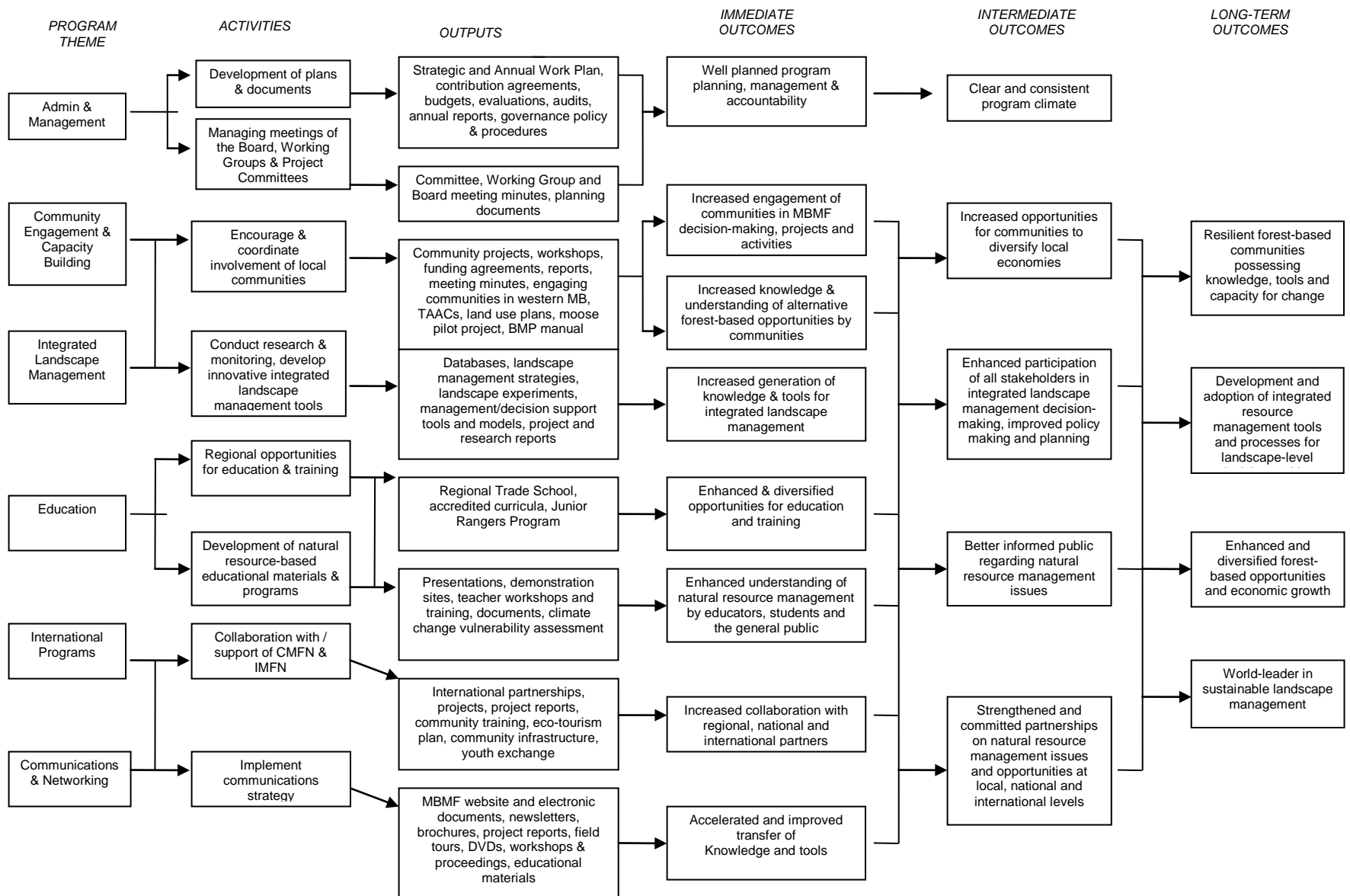


Figure 1. Manitoba Model Forest Logic Model

3.1 Immediate Outcomes

Theme Area: Administration and Management
Immediate Outcome #1: Well-planned program planning, management and accountability
<ul style="list-style-type: none"> • A part-time General Manager was hired on contract by the MBMF in November, 2007 (07-1-01 Staff Salaries and Associated Deductions) • A contribution agreement was developed and signed between NRCan and the MBMF • A 5 Year Strategic Plan and budget was developed and approved • A 6 month work plan and budget was developed and approved • The annual work plan for the fiscal 2008-09 year was developed and approved • Meetings of the three working groups (Forest Community Engagement and Capacity Building, Integrated Landscape Management, and Education) were held to develop budgets and the annual work plan for projects under their respective responsibility (07-5-01 Forest Community Engagement Working Group Support, 07-2-23 Integrated Landscape Management Working Group Support and 07-4-10 Education Working Group Support, respectively) • The MBMF Board of Directors met three times to develop, review and approve the annual work plan (07-1-06 Board Travel and Support) • Various pieces of office equipment were purchased (07-1-02 Supplies and Services) • Various insurances and office services were purchased (07-1-02 Supplies and Services) • The General Manager met with funding agencies and other partners to plan and discuss projects (07-1-04 Staff Travel), including meetings with project partners in Costa Rica
Theme Area: Community Engagement and Capacity Building
Immediate Outcome #2: Increased engagement of communities in MBMF decision-making, projects and activities
<ul style="list-style-type: none"> • Two Board of Directors meetings were held to develop and approve the 5 year strategic plan and annual work plans (6 month work plan, fiscal 2008-09 work plan). The Board represents more than 25 communities, organizations and interest groups, and gave an opportunity for direct input into identifying priorities for projects in the 5 year strategic plan and annual work plans (07-1-06 Board Support and Travel). Opportunities for more detailed input was also provided through meetings of the Forest Community Engagement and Capacity Building Working Group (07-5-01 Forest Community Engagement Working Group Support), Integrated Landscape Management Working Group (07-2-23 Integrated Landscape Management Working Group Support), and Education Working Group (07-4-10 Education Working Group Support) • Hollow Water First Nation took a lead and active role in securing funding from INAC, and held workshops in their community regarding a potential moose co-management project (07-5-13 Committee for Cooperative Moose Management) • A meeting was held with the West Region Tribal Council to discuss western Manitoba First Nation involvement in MBMF projects (07-5-14 Program Initiation in Western Manitoba) • Meetings of the First Nation Traditional Area Advisory Committees (TAACs) enabled communities to discuss natural resource management issues that affect their traditional areas (07-5-14 Traditional Area Advisory Committees) • Brokenhead Ojibway Nation (BON) helped to organize and participate in the initiation of the Ethno/Eco-tourism project (in collaboration with the Reventazon Model Forest) in Costa Rica. BON also provided their expertise in cultural tourism to the project (07-6-01 Development of

Indigenous Ethno-tourism enterprises in Costa Rica)
Immediate Outcome #3: Increased knowledge and understanding of alternative forest-based opportunities by communities
<ul style="list-style-type: none"> • The Hollow Water TAAC explored opportunities, through community-based workshops, for moose co-management (including associated economic spin-offs) in their traditional area (07-5-14 Traditional Area Advisory Committees) • A workshop for the general public on maple syrup production was held in collaboration with the Manitoba Forestry Association (07-5-10 Non-Timber Forest Products) • An Ethno/Eco-tourism project was initiated with the Cabecar Indigenous peoples of Costa Rica. The project will help the Nairi Awari communities of central Costa Rica develop ethno- and eco-tourism based economic opportunities in their indigenous reserve (07-6-01 Development of Indigenous Ethno-tourism enterprises in Costa Rica)
Theme Area: Integrated Landscape Management
Immediate Outcome #4: Increased generation of knowledge and tools for integrated landscape management
<ul style="list-style-type: none"> • The Manitoba Trappers Association and Tembec worked collaboratively together on the development of a trapline/forestry best management practices manual. Once completed, this document will be an invaluable tool for the trapping industry and forest industry to use to work together and resolve land use conflicts (07-5-10 Trapper Involvement) • An Aerial survey for moose was undertaken to evaluate effects of previously-lifted hunting closure in one area of the MBMF. This data was subsequently used to set hunting regulations for the area (07-5-13 Committee for Cooperative Moose Management) • A generic species risk assessment model (developed by Environment Canada for evaluating species at risk) was customized and used for 3 caribou ranges in the MBMF area (07-2-33 Caribou Management) • 24 caribou were captured and fitted with VHF and GPS collars to study habitat use, recruitment and mortality. Data for caribou already fitted with collars was downloaded and analyzed (07-2-33 Caribou Management) • A new project examining wolf and caribou interactions was initiated. This involved the placement of VHF and GPS collars on wolves (07-2-33 Caribou Management) • All historic data on the Bloodvein and Atiko woodland caribou ranges were compiled. The creation of a conservation strategy, using this information, was initiated (07-2-33 Caribou Management) • A draft report on habitat patch analysis was developed. This is a new tool for examining the importance of specific areas of the MBMF to caribou (07-2-33 Caribou Management) • 95 permanent vegetation sample plots were re-measured to assess the long-term efficacy of using a natural disturbance-based harvesting template in forest management (07-2-49 Natural Disturbance Regime) • Water quality information was collected on rivers in eastern Manitoba. This data will be used to understand the effects of land use practices on water quality and for the development of watershed planning tools (07-2-63 Brokenhead River Water Quality, 07-2-66 Watershed Management Tools) • Long-term vegetation monitoring plots were established in the City of Winnipeg to assess the impacts of climate change on urban forests. Plots were also established in the MBMF area to examine the ecological implications of leaving forested buffer strips along water bodies as a forest management prescription (07-2-06 Terrestrial Bio-monitoring)

Theme Area: Education
<p>Immediate Outcome #5: Enhanced and diversified opportunities for education and training</p> <ul style="list-style-type: none"> • A workshop for the general public on maple syrup production was held in collaboration with the Manitoba Forestry Association (07-5-10 Non-Timber Forest Products) • High school students received training in, and participated in the collection of water quality and forest vegetation health data (07-2-63 Brokenhead River Water Quality, 07-2-06 Terrestrial Bio-monitoring) • A training session was held for NGOs and employees of the City of Winnipeg on the establishment and long-term monitoring of forest vegetation plots (07-2-06 Terrestrial Bio-monitoring) • The Winnipeg River Learning Centre (WRLC) opened its doors, offering the first suite of education and training opportunities for the MBMF area. Programs at the WRLC provide local communities with post-secondary training, helping to diversify the available workforce (07-4-07 Winnipeg River Learning Centre) • Planning began for the implementation of an annual Junior Rangers program, which would provide training opportunities in natural resource management for Aboriginal and non-Aboriginal youth in the MBMF area (07-4-08 Junior Rangers) • A woodlot tree planting workshop was held in collaboration with the Manitoba Forestry Association (07-4-09 Woodlot Education) • Planning was undertaken for the 2008 Envirothon program, which provides an opportunity for high school students to learn about natural resource management issues and to put that knowledge to work in an “Olympic-style” environmental competition (07-4-13 Education for Sustainable Development) • GPS training was provided by the MBMF to members of the Indigenous peoples of the Nairi Awari communities in Costa Rica as part of a new Ethno/Eco-tourism project (07-6-01 Development of Indigenous Ethno-tourism enterprises in Costa Rica)
<p>Immediate Outcome #6: Enhanced understanding of natural resource management by educators, students and the general public</p> <ul style="list-style-type: none"> • A member of the MBMF caribou committee gave a presentation at a national caribou conference in Toronto, on MBMF caribou research and management strategies (07-2-33 Caribou Management) • A presentation on MBMF caribou research and management was made at the Manitoba Parks and Protected Areas Research Forum (07-2-33 Caribou Management) • A peer-reviewed paper on the effects of all-weather logging roads on caribou in eastern Manitoba was published in the journal “Rangifer”. The paper is based on research conducted by the MBMF (07-2-33 Caribou Management) ▪ Preliminary results of the Watershed Planning Tools project were presented at an international watershed management conference in Orlando, Florida (07-2-66 Watershed Management Tools) • Presentation of the MBMF woodland caribou curriculum to educators from western Canada at the Forest Ed West conference in Kelowna, BC (07-4-10 Education Working Group Support, 07-4-14 Provincial Natural Resource Management Curricula) • Presentations on MBMF school curricula were also made to high school teachers at the annual provincial Special Area Groups in-service and at an EECOM conference (07-4-14 Provincial Natural Resource Management Curricula) • A workshop was conducted with education students (future teachers) at the University of

<p>Winnipeg on the use of the MBMF woodland caribou curriculum (07-4-14 Provincial Natural Resource Management Curricula)</p> <ul style="list-style-type: none"> • An article was written on Ecoforestry in the Journal of Private Land Forestry in Manitoba (authored by MBMF Education Coordinator) (07-4-09 Woodlot Education)
<p>Theme Area: International Programs</p>
<p>Immediate Outcome #7: Increased collaboration with regional, national and international partners</p>
<ul style="list-style-type: none"> • An Ethno/Eco-tourism project was initiated with the Nairi Awari communities of the Cabecar indigenous peoples in Costa Rica. The project will provide for the development of an eco-tourism management plan for their reserve area, training in the eco-tourism and hospitality industry and improve community infrastructure in order to receive eco-tourism clients. This is a collaboration between the MBMF, Reventazon Model Forest, Centre for Tropical Agriculture Research and Higher Learning (CAITE), and the indigenous communities of Brokenhead Ojibway Nation (Manitoba) and Nairi Awari (Costa Rica).
<p>Theme Area: Communications and Networking</p>
<p>Immediate Outcome #8: Accelerated and improved transfer of knowledge and tools</p>
<ul style="list-style-type: none"> • Hosted CMFN meeting in Wpg in Feb/tour of Tembec FML (07-7-02 Communications Support) • MBMF website was re-designed (07-7-01 Communications Strategy Implementation) • A digital library of all MBMF publications (spanning 15 years) was developed and put on DVD. This is available to the public. (07-7-01 Communications Strategy Implementation) • A new MBMF floor-standing display was developed, along with a wooden brochure holder that sits in front of the display (07-7-01 Communications Strategy Implementation) • Planning and financial support for the MBMF-SFMN Landscape Design conference (07-7-02 Communications Support) • Production and distribution of the MBMF woodland caribou curriculum and Shadows of the Forest DVD to all First Nation schools in Manitoba (07-7-02 Communications Support) • Purchase of various promotional materials for handout at conferences, workshops and school field trips (07-7-02 Communications Support)

3.2 Intermediate Outcomes

There are 6 intermediate outcomes that the MBMF has developed under the FCP. Many of the intermediate outcomes cross over the 6 main Theme Areas of our program. While the intermediate outcomes will not be realized until the latter part of the FCP, many of the projects and activities in the first 6 months of the FCP have already contributed to achieving these outcomes. These are outlined below.

<p>Intermediate Outcome #1: Clear and consistent program climate</p>
<p>Progress towards meeting this intermediate outcome came mainly through the development of a strategic program plan and subsequent annual work plans. Specific activities in the first six months of the FCP included:</p>
<ul style="list-style-type: none"> • Hiring of a General Manager and Executive Assistant (07-1-01 Staff Salaries and Associated Deductions) • Development and approval of a 5 year Contribution Agreement with NRCan-CFS • Development and approval of a 5 Year Strategic Plan and Budget under the FCP (07-1-06)

Board Support and Travel)

- Development and approval of a 6 month (2007/08 work plan) and full year (2008/09) work plan (07-1-06 Board Support and Travel)

Intermediate Outcome #2: Increased opportunities for communities to diversify local economies

Progress towards this intermediate outcome is being addressed by working with communities to explore opportunities for economic diversification, as well as the provision of training programs through the new Winnipeg River Learning Centre. Specific activities include:

- Exploration with First Nations of the co-management of moose in the MBMF area, including enforcement and monitoring/research careers (07-5-13 Committee for Cooperative Moose Management)
- Exploration of business opportunities through maple syrup production through workshops (07-5-10 Non-Timber Forest Products)
- Development of eco-tourism based economic opportunities through the creation of an ethno-eco-tourism project with Indigenous communities in Costa Rica (07-6-01 Development of Indigenous Ethno-tourism enterprises in Costa Rica)
- Training opportunities to enhance diversification of the economy in the MBMF area by the start-up of the Winnipeg River Learning Centre (07-4-07 Winnipeg River Learning Centre)

Intermediate Outcome #3: Enhanced participation of all stakeholders in integrated landscape management decision-making

Progress towards meeting this intermediate objective focuses on enabling participation of communities and other organizations in projects that allow for both direct and indirect input into decision-making. Specific activities included:

- Community-based workshops in Hollow Water First Nation to explore co-management of moose in the MBMF area (07-5-13 Committee for Cooperative Moose Management)
- Meetings of the First Nation Traditional Area Advisory Committees to review, discuss and provide recommendations to Chief and Councils on matters relating to land use activities in their traditional land use areas (07-5-14 Traditional Area Advisory Committees)
- Leadership of the Manitoba Trappers Association in the development of a draft trap line/forestry best management practices manual (07-5-10 Trapper Involvement)
- Multi-stakeholder meetings of the Eastern Manitoba Woodland Caribou Advisory Committee (07-2-33 Caribou Management)

Intermediate Outcome #4: Improved policy making and planning for integrated landscape management

During the first six months of the FCP, progress towards this intermediate objective was focused on data collection that would allow for more informed development of policy, as well as the development of several natural resource management tools. Specific activities included:

- Collection of population-level data on moose and woodland caribou (07-5-13 Committee for Cooperative Moose Management, 07-2-33 Caribou Management)
- Risk assessment performed for three ranges of woodland caribou in eastern Manitoba. This is being used for the development of a conservation strategy for these woodland caribou ranges (07-2-33 Caribou Management)
- Habitat patch analysis was undertaken for several woodland caribou ranges (07-2-33 Caribou Management)
- Water quality data was collected on a number of rivers in the MBMF area, which will be used to develop watershed planning tools (07-2-63 Brokenhead River Water Quality, 07-2-66 Watershed Management Tools)

Intermediate Outcome #5: Better informed public regarding natural resource management issues

Progress towards this intermediate objective mainly involved education and training, presentations, workshops and the development of communications tools. Specific activities included:

- Meetings of the 3 main Working Groups to discuss projects (07-5-01 Forest Community Engagement Working Group Support, 07-2-23 Integrated Landscape Management Working Group Support, 07-4-10 Education Working Group Support)
- First Nation community workshops on moose co-management, meetings of the First Nation Traditional Area Advisory Committees to discuss resource management issues (07-5-13 Committee for Cooperative Moose Management, 07-5-14 Traditional Area Advisory Committees)
- Participation of high school students, NGOs and the City of Winnipeg in MBMF research projects (07-2-06 Terrestrial Bio-monitoring, 07-2-63 Brokenhead River Water Quality)
- Start-up and programming at the Winnipeg River Learning Centre (07-4-07 Winnipeg River Learning Centre)
- Tree planting workshop held with the Manitoba Forestry Association (07-4-09 Woodlot Education)
- Planning for the 2008 Junior Rangers Program and 2008 Envirothon (07-4-08 Junior Rangers, 07-4-13 Education for Sustainable Development)
- Numerous presentations on MBMF projects and natural resource management to students, school teachers and the general public
- Distribution of MBMF curriculum materials to First Nation and other schools (07-4-14 Provincial Natural Resource Management Curricula, 07-7-02 Communications Support)
- Re-design of MBMF website and creation of a digital library of MBMF publications (07-7-01 Communications Strategy Implementation)

Intermediate Outcome #6: Strengthened and committed partnerships on natural resource management issues and opportunities at local, national and international levels

Progress towards this intermediate outcome occurred through developing new funding and project partnerships, hosting meetings at which partners discussed natural resource management issues, and forging new international partnerships. Specific activities included:

- Meetings of the MBMF Board of Directors and MBMF Working Groups provided a platform for strengthening existing partnerships. Meetings of individual project committees also facilitated this.
- As a result of the FCP, new partnerships were also formed. This included formal funding partnerships with Manitoba Conservation, Manitoba Hydro and Louisiana Pacific, as well as new working/project relationships, including the initiation of a project in Costa Rica and a new partnership between Brokenhead Ojibway Nation in Manitoba and the Nairi Awari peoples of Costa Rica.

3.3 Long-term Outcomes

Long-term outcomes are those that will be achieved by the end of the 5 year Forest Communities Program. There are four main long-term outcomes that the MBMF has developed under the FCP:

Resilient forest-based communities that possess the knowledge, tools and capacity needed to adapt to changes in the natural resource sector and forest environment
Enhanced development and adoption of integrated resource management tools and processes for landscape-level decision making
Enhanced and diversified forest-based opportunities and economic growth in rural communities
Recognition as a world-leader in sustainable landscape management, both domestically and internationally

While it is not possible to demonstrate the attainment of measurable targets towards long-term outcomes after only 6 months of the FCP, the projects and activities outlined above for the immediate and intermediate outcomes clearly demonstrate that progress is being made towards each of the long-term outcomes. Initiatives such as the start-up of the Winnipeg River Learning Centre is providing training, knowledge and tools in a diversity of career sectors, which will eventually lead to a more diversified workforce in the MBMF area. Coupled with an exploration of alternative economic opportunities from the forest with the MBMF communities, this in turn will allow for a more diversified economy in the long run. The exploration of a moose co-management regime between First Nations and Manitoba Conservation, and the establishment of First Nation Traditional Area Advisory Committees will lead to more direct community participation in natural resource decision-making. The initiation of a joint project between the MBMF, Brokenhead Ojibway Nation, the Reventazon Model Forest and the Indigenous Nairi Awai communities in Costa Rica will allow for a two way exchange of information and ideas regarding ethno-eco-tourism. This project will also facilitate the development of a new partnership between Brokenhead Ojibway Nation in Manitoba and Indigenous communities in Costa Rica.

It is anticipated that as the FCP progresses, the attainment of the long-term outcomes will be more easily measurable. Thus, the progress towards the long-term outcomes will become more evident in subsequent annual reports.

4.0 Annual Financial Report

A financial summary for actual program/project expenditures (Table 1) as well as a summary of the cash and in-kind contributions of all partners (Table 2) for the first 6 months of the FCP (2007-08) are provided below. In addition, Table 3 provides a summary of the reconciled programs/projects expenditures for the first 6 months of the FCP (2007-08) and projected annual expenditures to 2012.

Table 1 Program expenditures and in-kind estimates during the period of October, 2007 to March, 2008 by Theme Area and projects.

Theme Area and Project	NRCan-CFS (FCP Funds)	Partner/Other		Total
		Cash	In-kind	
Administration	Cash	Cash	In-kind	Total
Salaries and Associated Deductions	\$53,515	-	-	\$53,515
Supplies and Services	\$16,038	\$607	\$12,500	\$29,145
Staff Travel	\$5,959	\$27	-	\$5,986
Board Travel and Support	\$7,070	\$451	\$32,000	\$39,521
Subtotal	\$82,582	\$1,085	\$44,500	\$128,167
Forest Community Engagement	Cash	Cash	In-kind	Total
Working Group Support	\$2,392	-	\$1,200	\$3,592
Moose Management	\$2,300	-	\$12,000	\$14,300
Program Initiation in Western Manitoba	-	-	\$1,000	\$1,000
Traditional Area Advisory Committees	\$10,000	\$5,000	\$17,000	\$32,000
First Nation Land Use Planning	-	-	-	-
Trapper Involvement	-	\$3,267	\$4,500	\$7,767
Non-timber Forest Products	\$1,000	-	\$1,500	\$2,500
Subtotal	\$15,692	\$8,267	\$37,200	\$61,159
Integrated Landscape Management				
Working Group Support	\$2,454	-	\$4,800	\$7,254
Caribou Management	\$10,000	\$144,921	\$136,250	\$291,171
Natural Disturbance Regime	-	\$15,000	\$24,000	\$39,000
Brokenhead River Water Quality	-	\$10,350	\$17,300	\$27,650
Watershed Management Tools	-	\$25,000	\$15,500	\$40,500
Terrestrial Bio-monitoring	-	\$37,066	\$14,000	\$51,066
Species of Special Interest	-	-	-	-
Subtotal	\$12,454	\$232,337	\$211,850	\$456,641

Theme Area and Project	NRCan-CFS (FCP Funds)	Partner/Other		Total
		Cash	In-kind	
Education	Cash	Cash	In-kind	Total
Working Group Support	\$1,483	-	\$8,700	\$10,183
Winnipeg River Learning Centre	-	\$25,000	\$102,000	\$127,000
Junior Rangers	\$5,000	\$1,734	\$6,500	\$13,234
Curriculum	\$4,956	\$2,679	\$6,000	\$13,635
Woodlot Education	\$2,500	-	\$3,300	\$5,800
Education for Sustainable Development	\$2,500	\$8,475	\$15,000	\$25,975
Subtotal	\$16,439	\$37,888	\$141,500	\$195,827
International Programs				
Costa Rica-Reventazon MF	\$15,093	\$1,515	\$55,000	\$71,608
Subtotal	\$15,093	\$1,515	\$55,000	\$71,608
Communications and Networking				
Communications Strategy Implementation	\$19,986	-	-	\$19,986
Communications Support	\$10,000	\$2,500	-	\$12,500
Subtotal	\$29,986	\$2,500	-	\$32,486
Grand Total	\$172,246	\$283,592	\$489,050^{*1}	\$945,888

*1 This figure does not include an estimated \$750,639 of additional in-kind contributions as part of the MBMF Community Opportunities Fund project. The Community Opportunities Fund was initiated during the 6 month extension period of the former Model Forest Program (i.e., prior to the FCP). As such, this project does not appear in this annual report. However, many of the Community Opportunities Fund projects carried over to the first six months of the FCP, providing \$734,639 of additional in-kind contributions to the MBMF during the first 6 months of the FCP. Therefore, total annual in-kind contributions to the MBMF in the full twelve month 2007/08 fiscal year was \$1,240,689 (as indicated in the MBMF audited annual financial statements).

Table 2 Financial Contributions during the First 6 Months of FCP (October 1, 2007 to March 31, 2008)

Contributor	Cash	In-Kind	Total
NRCan-CFS (FCP)	\$175,000	-	\$175,000
Manitoba Conservation	\$99,300	\$142,750	\$242,050
Manitoba Hydro	\$87,501	\$6,750	\$94,251
Louisiana-Pacific	\$25,000	\$2,000	\$27,000
Tembec	\$25,000	\$42,400	\$67,400
Sustainable Development Innovations	\$33,320	-	\$33,320
Species Conservation Fund	\$27,500	-	\$27,500
EMAN	\$12,000	-	\$12,000
MBMF	\$13,884	\$6,250	\$20,134
Brokenhead Ojibway First Nation	\$1,316	\$10,800	\$12,116
Manitoba Habitat Heritage Corporation	\$1,279	-	\$1,279
RM of Alexander	\$1,000	-	\$1,000
RM of Lac du Bonnet	\$1,000	\$200	\$1,200
LDG of Pinawa	\$1,000	-	\$1,000
Eco Action	\$580	-	\$580
MBMF Board of Directors	-	\$32,000	\$32,000
Shining Waters Heritage Region	-	\$200	\$200
Town of Lac du Bonnet	-	\$200	\$200
Manitoba Metis Federation	-	\$200	\$200
Manitoba Model Forest area First Nations	-	\$15,050	\$15,050
West Region Tribal Council	-	\$500	\$500
Manitoba Trappers Association	-	\$5,000	\$5,000
Manitoba Forestry Association	-	\$6,000	\$6,000
Integrated Landscape Management Working Group	-	\$4,800	\$4,800
Caribou Project Partners	-	\$3,450	\$3,450
Ecostem	-	\$15,000	\$15,000
Manitoba Water Stewardship	-	\$2,500	\$2,500
Department of Fisheries and Oceans	-	\$500	\$500
Brokenhead River Restoration Society	-	\$1,000	\$1,000
Sunrise School Division	-	\$2,000	\$2,000
Miette Environmental	-	\$31,000	\$31,000
Northeast Sustainable Development Assoc	-	\$1,500	\$1,500
MBMF area Schools	-	\$1,000	\$1,000
Save Our Seine	-	\$1,000	\$1,000
City of Winnipeg	-	\$1,000	\$1,000
Education Working Group	-	\$8,700	\$8,700
Partners of Winnipeg River Learning Centre	-	\$100,000	\$100,000
Manitoba Youth and Training	-	\$1,000	\$1,000
Science Teachers Assoc of Manitoba	-	\$1,000	\$1,000

University of Winnipeg	-	\$1,000	\$1,000
Manitoba Christmas Tree Growers Assoc	-	\$300	\$300
Woodlot Association of Manitoba	-	\$1,500	\$1,500
Cooks Creek Conservation District	-	\$500	\$500
Various Costa Rican Project Partners	-	\$40,000	\$40,000
Total	\$504,680	\$490,050 ^{*1}	\$994,730

*1 Plus an additional \$750,639 of in-kind contributions through the Community Opportunities Fund, as explained at the end of Table 1.

Table 3 Five Year Projection of Forest Community Program (NRCan-CFS) Funding Expenditures

Theme Area and Project	2007/08 (reconciled)	2008/09 (projected)	2009/10 (projected)	2010/11 (projected)	2011/12 (projected)	Total
Administration	\$82,582	\$168,160	\$160,000	\$155,000	\$129,000	\$694,742
Forest Community Engagement	\$15,692	\$27,960	\$30,000	\$31,250	\$37,750	\$142,652
Integrated Landscape Management	\$12,454	\$55,920	\$60,000	\$62,500	\$75,500	\$266,374
Education	\$16,439	\$27,960	\$30,000	\$31,250	\$37,750	\$143,399
International Programs	\$15,093	\$15,000	\$15,000	\$15,000	\$15,000	\$75,093
Communications and Networking	\$29,986	\$30,000	\$30,000	\$30,000	\$30,000	\$149,986
Total	\$172,246	\$325,000	\$325,000	\$325,000	\$325,000	\$1,472,246

Note: 2007/08 are actual values

5.0 Other

Manitoba Model Forest Office

P.O. Box 6500

Pine Falls, MB R0E 1M0

(204) 367-5232 (tel)

(204) 367-8897 (fax)

www.manitobamodelforest.net

Staff and Theme Area Consultants

General Manager

Dr. Brian G. Kotak

(204) 367-5232 (tel)

(204) 345-4835 (cellular)

miette@granite.mb.ca

Executive Assistant

Beverly Dube

(204) 367-5232 (tel)

bdube@mts.net

Education Coordinator Consultant

Bob Austman

(204) 268-1140 (tel)

(204) 268-0648 (cellular)

baustman@granite.mb.ca

Community Involvement Consultant
Rene Barker
(204) 333-5136 (cellular)
pogg@mts.net

List of Project Contacts

Project Contact	Project Name	Contact Information
Beverly Dube, MBMF	<ul style="list-style-type: none">SalariesSupport and ServicesTravelBoard Support	(204) 367-5232 (tel) bdube@mts.net
Brian Kotak, MBMF	<ul style="list-style-type: none">Brokenhead River Water QualityWatershed Management ToolsTerrestrial Bio-monitoringWestern Manitoba ProgramsEthno-tourism (Costa Rica)Communications Strategy ImplementationCommunications Support	(204) 367-5232 (tel) (204) 345-4835 (cellular) miette@granite.mb.ca
Bob Austman, Education Consultant	<ul style="list-style-type: none">Junior RangersCurriculumEducation for Sustainable DevelopmentNon-timber Forest Products	(204) 268-1140 (tel) (204) 268-0648 (cellular) baustman@granite.mb.ca
Rene Barker, Community Consultant	<ul style="list-style-type: none">Traditional Area Advisory CommitteesFirst Nation Land Use Plans	(204) 333-5136 (cellular) pogg@mts.net
Vince Keenan, Tembec	<ul style="list-style-type: none">Integrated Landscape Management Working Group SupportSpecies of Special Interest	(204) 367-5224 (tel) vince.keenan@tembec.com
Dennis Brannen, Manitoba Conservation	<ul style="list-style-type: none">Caribou Management	(204) 345-1429 (tel) dennis.brannen@gov.mb.ca
James Ehnes, EcoStem Inc	<ul style="list-style-type: none">Natural Disturbance	(204) 772-7204 (tel)

	Regime	james.ehnes@ecostem.com
Rod Bollman	<ul style="list-style-type: none"> ▪ Education Working Group Support 	(204) 756-3668 (tel) rbollman@mts.net
Jennifer Lidgett, Tembec	<ul style="list-style-type: none"> ▪ Education Working Group Support 	(204) 367-5221 (tel) jennifer.lidgett@tembec.com
Gary Enns, Winnipeg River Learning Centre	<ul style="list-style-type: none"> ▪ Winnipeg River Learning Centre 	(204) 882-2236 (tel) garryenns@genesisnetworks.ca
Bob Yatkowsky, Tembec	<ul style="list-style-type: none"> ▪ Forest Community Engagement Working Group Support ▪ Trapper Involvement 	(204) 367-5225 bob.yatkowsky@tembec.com
Barry Waito, LP	<ul style="list-style-type: none"> ▪ Western Manitoba Programs 	(204) 734-4102 (tel) barry.waito@lpcorp.com
Kelly Leavesley, Manitoba Conservation	<ul style="list-style-type: none"> ▪ Committee for Moose Management 	(204) 345-1427 (tel) kelly.leavesley@gov.mb.ca
Ken Fosty, Manitoba Forestry Association	<ul style="list-style-type: none"> ▪ Woodlot Education 	(204) 453-3182 (tel) kfosty@mts.net

List of Manitoba Model Forest Board of Directors

Assembly of Manitoba Chiefs	Black River First Nation	Brokenhead Ojibway Nation
Community of Bissett	Community of Manigotagan	Community of Seymourville
Hollow Water First Nation	Local Government District of Pinawa	Manitoba Conservation (Government of Manitoba)
Manitoba Metis Federation	Manitoba Naturalists Society	Manitoba Trappers Association
North East Sustainable Development Association	Rural Municipality of Alexander	Rural Municipality of Lac du Bonnet
Rural Municipality of Victoria Beach	Sagkeeng First Nation	Tembec Enterprises Inc.
Tembec Unions	Time To Respect Earth's Ecosystems (TREE)	Town of Lac du Bonnet
University of Manitoba	University of Winnipeg	Wassaabiyaa Shining Waters Heritage Region
Winnipeg River Brokenhead Community Futures Development Corporation	Woodlot Association of Manitoba	

Note: Louisiana-Pacific, Manitoba Forestry Association, Manitoba Hydro and the Mining Association of Manitoba will be invited to join the Board of Directors in future years.