



Shell River Integrated Watershed Management Planning Process

Manitoba Model Forest Watershed Planning Meeting

Eric Busch
Lake of the Prairies Conservation District

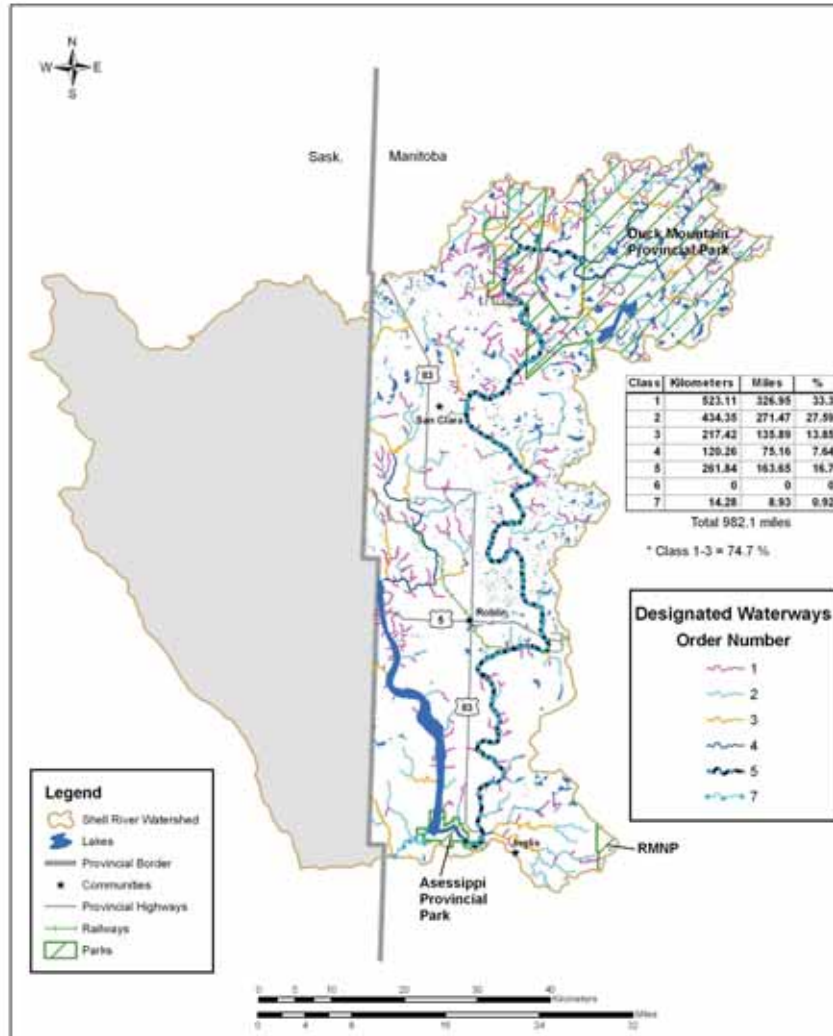


Summary

- Shell – Assiniboine Watershed Characteristics
- Shell - Assiniboine River IWMP Draft Goals
- Why we're doing it
- Learning some lessons
 - Engaging public
 - Timeline
 - Who's responsible?

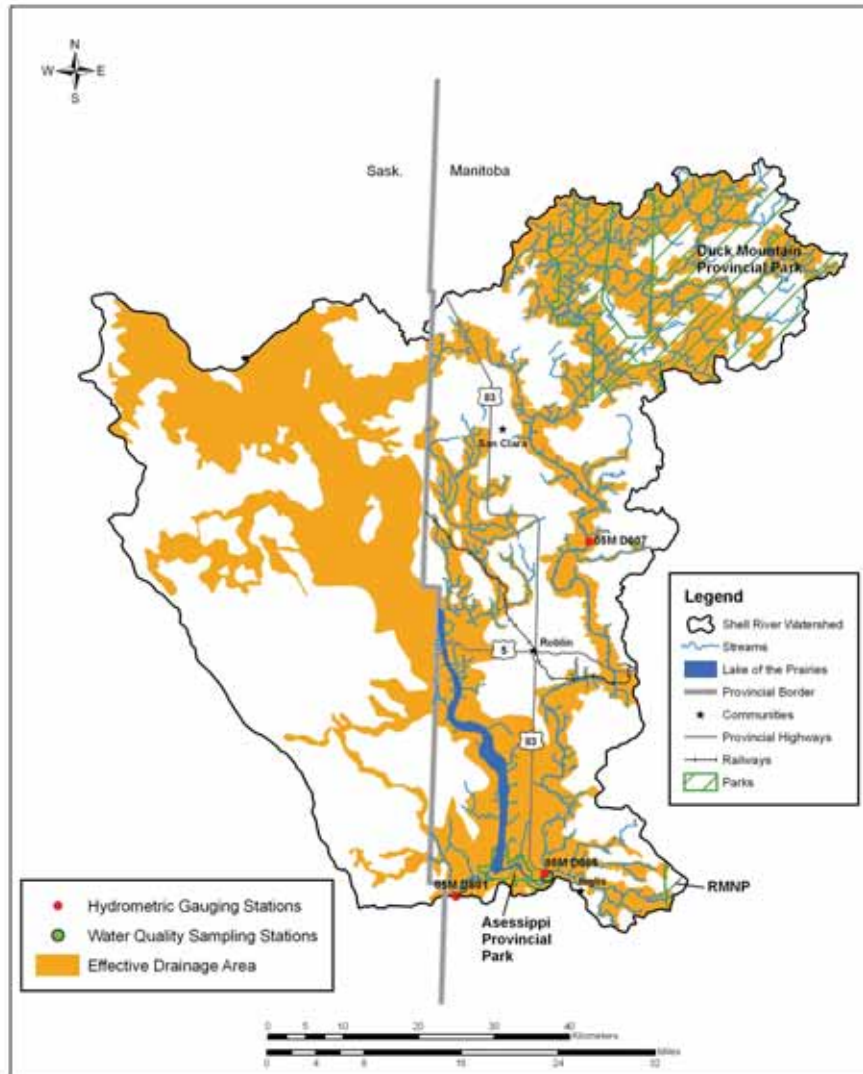


Shell- Assiniboine Watershed



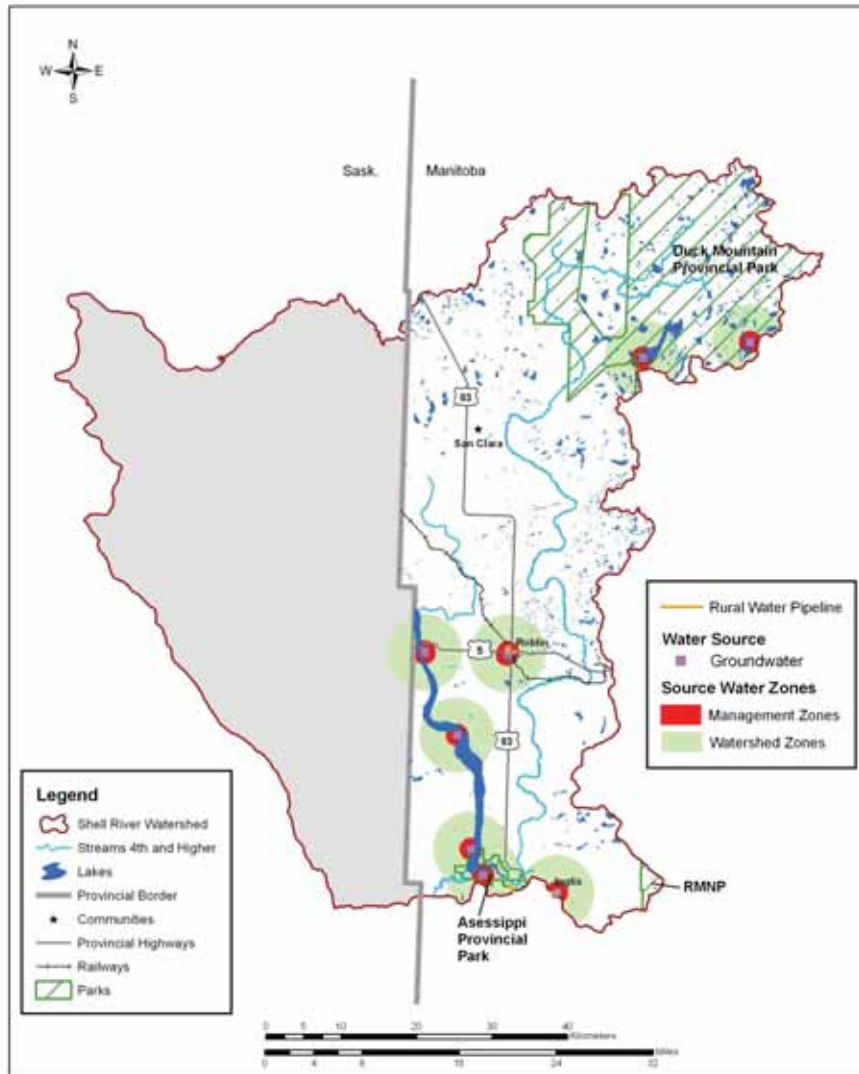


Shell- Assiniboine Watershed



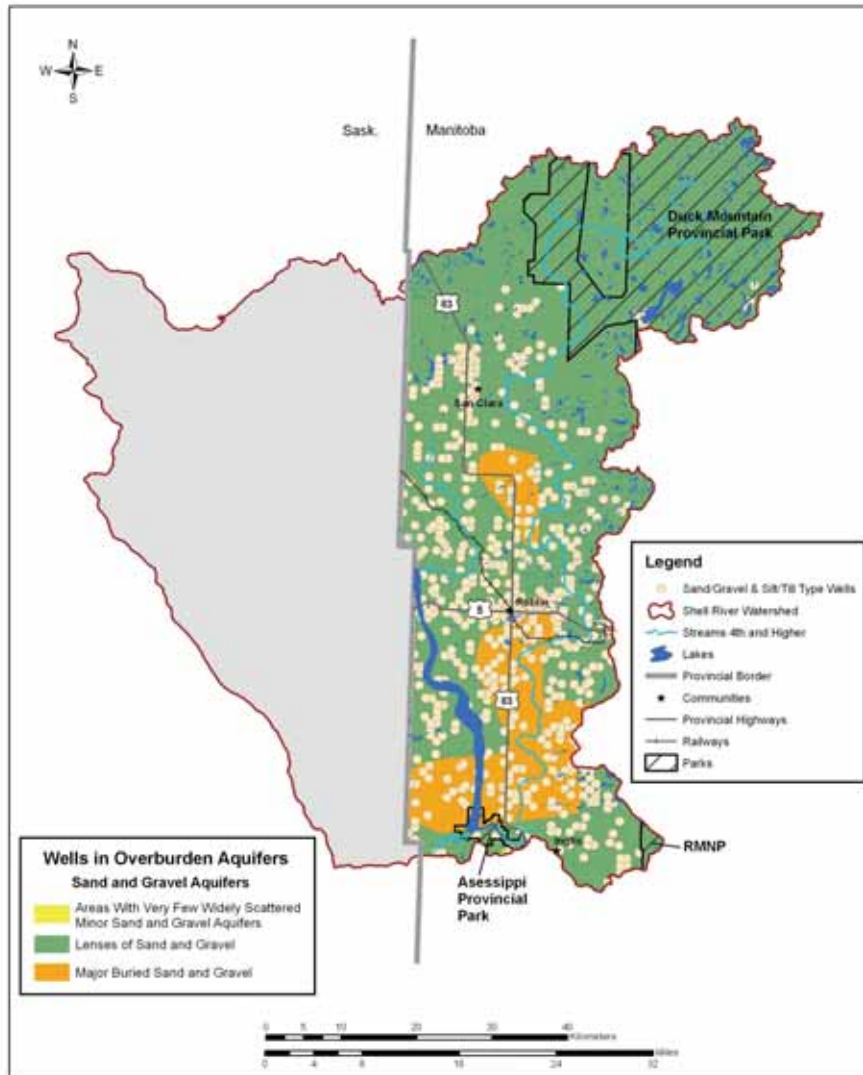


Shell- Assiniboine Watershed





Shell-Assiniboine Watershed





IWMP

Goals + Objectives.

1. To ensure Drinking Water and Ground Water supplies are safeguarded now and into the future
2. To maintain and improve surface water quality that ensures the health of aquatic ecosystems and enjoyment and benefit of our communities
3. Promote and support responsible Surface Water Management to reduce soil erosion and flooding and protect natural wetland habitat



IWMP

Goals + Objectives.

4. Engage watershed residents by providing watershed health information and educational activities that promote opportunities for action

6. Encourage and support Sustainable Development efforts within the district

6. Maintain communications with watershed managers upstream to encourage co-operation across jurisdictional borders



Why we're doing it

- Priority of Manitoba Water Stewardship
- Help target limited funds
- Engage Residents and Stakeholders
- Showcase community planning efforts
- Build local knowledge
- Explore partnerships in watershed management
- Provide direction for Development Plans



Learning some lessons

- Engaging public
 - Watershed planning is not high priority
 - Perception of planning group can influence input heavily
 - Delicate balance between educating and drawing out unbiased public priorities
 - Public awareness built through consultations



Learning some lessons

- Timeline
 - Tendency to take waaaaaay too long.
 - Lose vital team members
 - Lose Public/stakeholder interest
 - Lose focus on original meaning and planning needs.
 - Can turn a planning process into a burden



Learning some lessons

- Who's responsible?
 - Who's plan is this?
 - What level of communication is necessary to develop shared goals?
 - Learning to leave our organizational shell
 - Community is protecting this watershed, not one organization alone



Good Things on the Horizon

- Getting on the same map as other resource managers
- Jumping off point to engage greater community
- Learning to do what we do best and build our roles as community and stakeholder connectors



What Next?