



*Sustainable Watershed Based Planning
MMF Workshop – Swan River*



SLWCD - Background

Office opened July 2007.

District is divided into 4 sub-districts based on watershed boundaries:

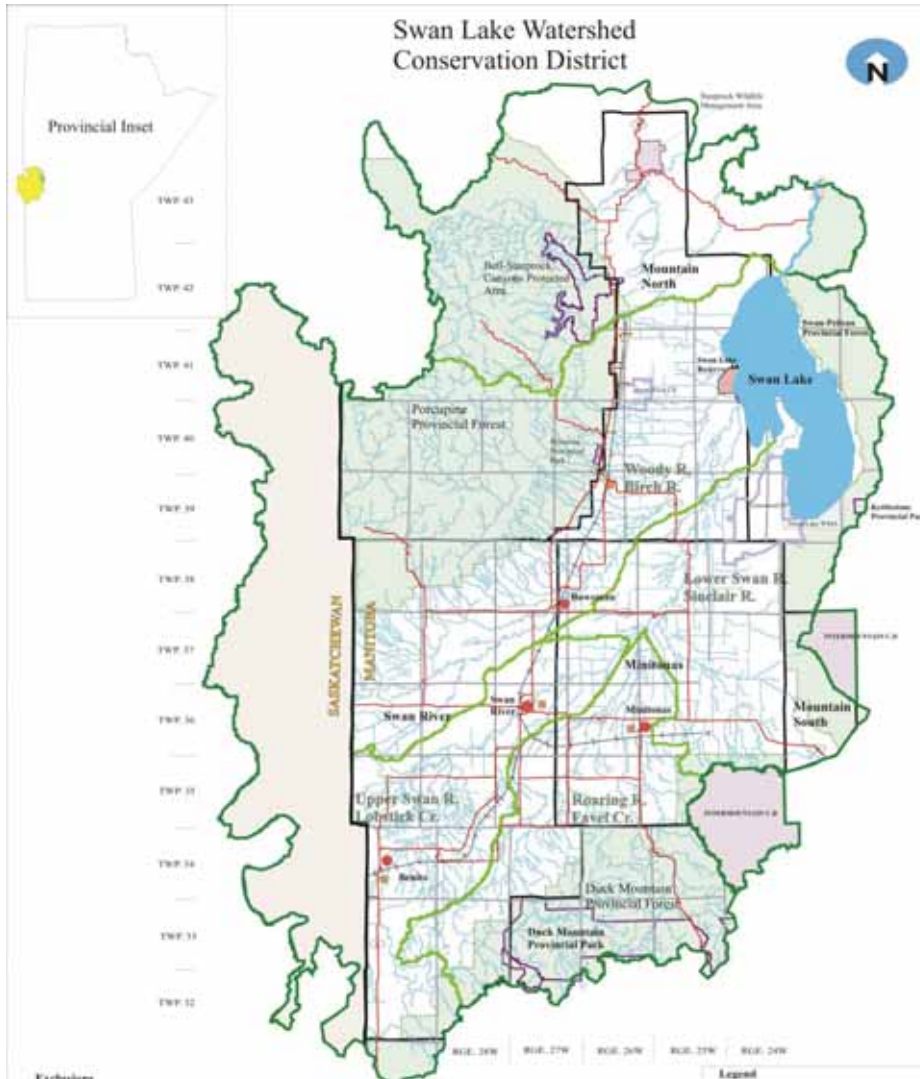
- Upper Swan River – Lobstick Creek
- Roaring River – Favel Creek
- Woody River – Birch River
- Lower Swan River – Sinclair River

Bell River and Steeprock River watersheds are also included.

Swan Lake Watershed Conservation District



Provincial Inset



Exclusions

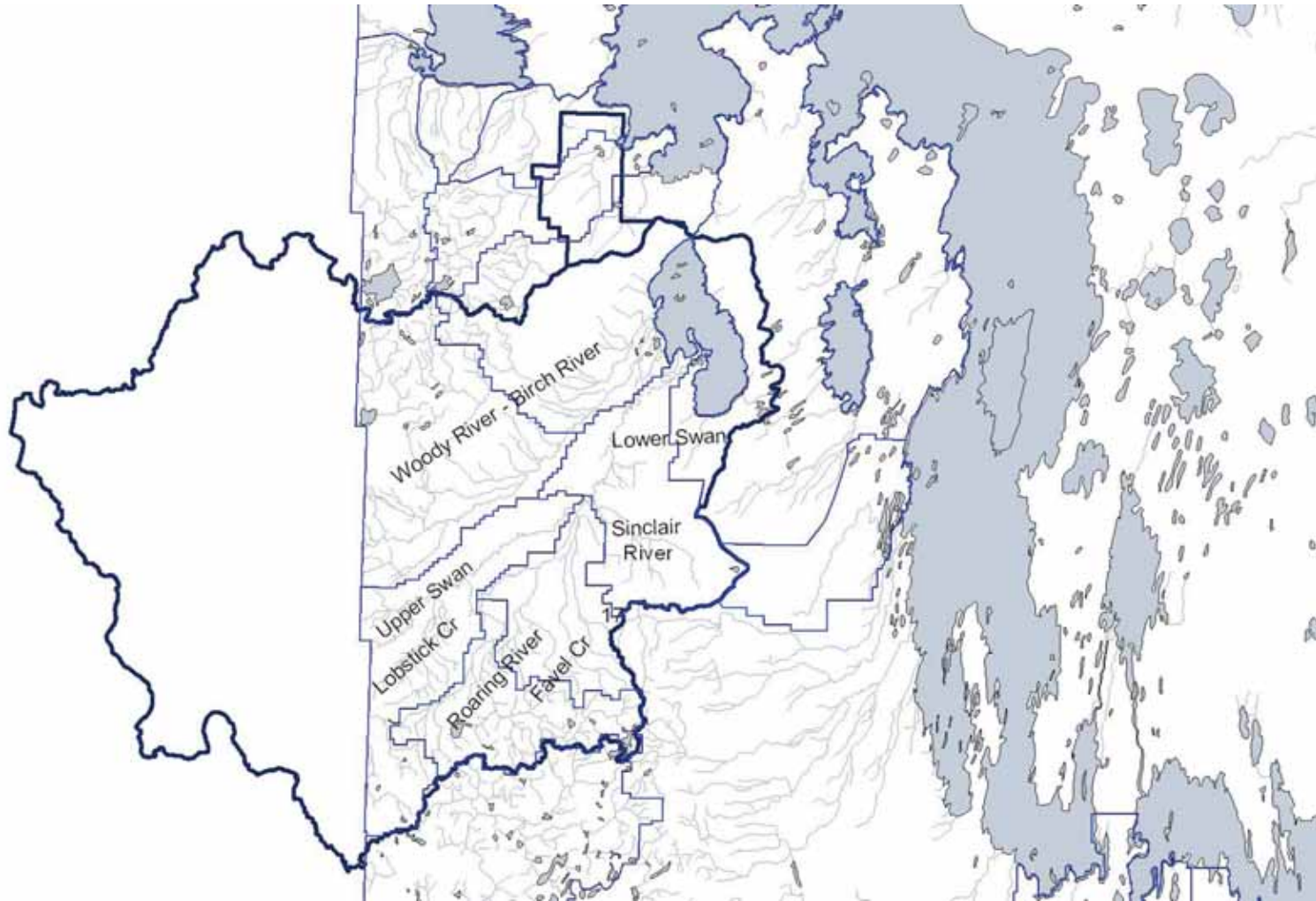
The following are excluded from the jurisdiction, authority and control of the board.

- a. Indian reserves, as defined in the Indian Act (Canada)
- b. Federal parks, provincial parks, and provincial forests



Legend





*Town of Minitonas
Town of Swan River*

*Village of Benito
Village of Bowsman*

*Rural Municipality of Minitonas
Rural Municipality of Mountain N & S*

*Rural Municipality of Swan River
Province of Manitoba*



History

- Swan Lake Basin Management Plan was completed and presented to Provinces of Manitoba and Saskatchewan June, 2004.
- Public consultations, Stakeholders Round Table and Technical Advisory Group from entire watershed.
- Dec. 2007 – Swan Lake Basin Management Plan advisory group disbanded and all information compiled was handed over to the SLWCD.



Swan Lake Basin Management Plan

Recommended Actions – Basin Wide

Basin Education Plan

- Raise awareness of the Basin
- Distribute information on the state of the basins water resources, and encourage further study.

Water Report Plan

- Compile water related data on a basin basis.
- Complete an annual report on the state of the basins water resources.



Recommended Actions cont...

Recommended to have separate action groups in each Province.

Riparian Enhancement Plan

-Protect and enhance riparian environments and maintain associated wetlands.

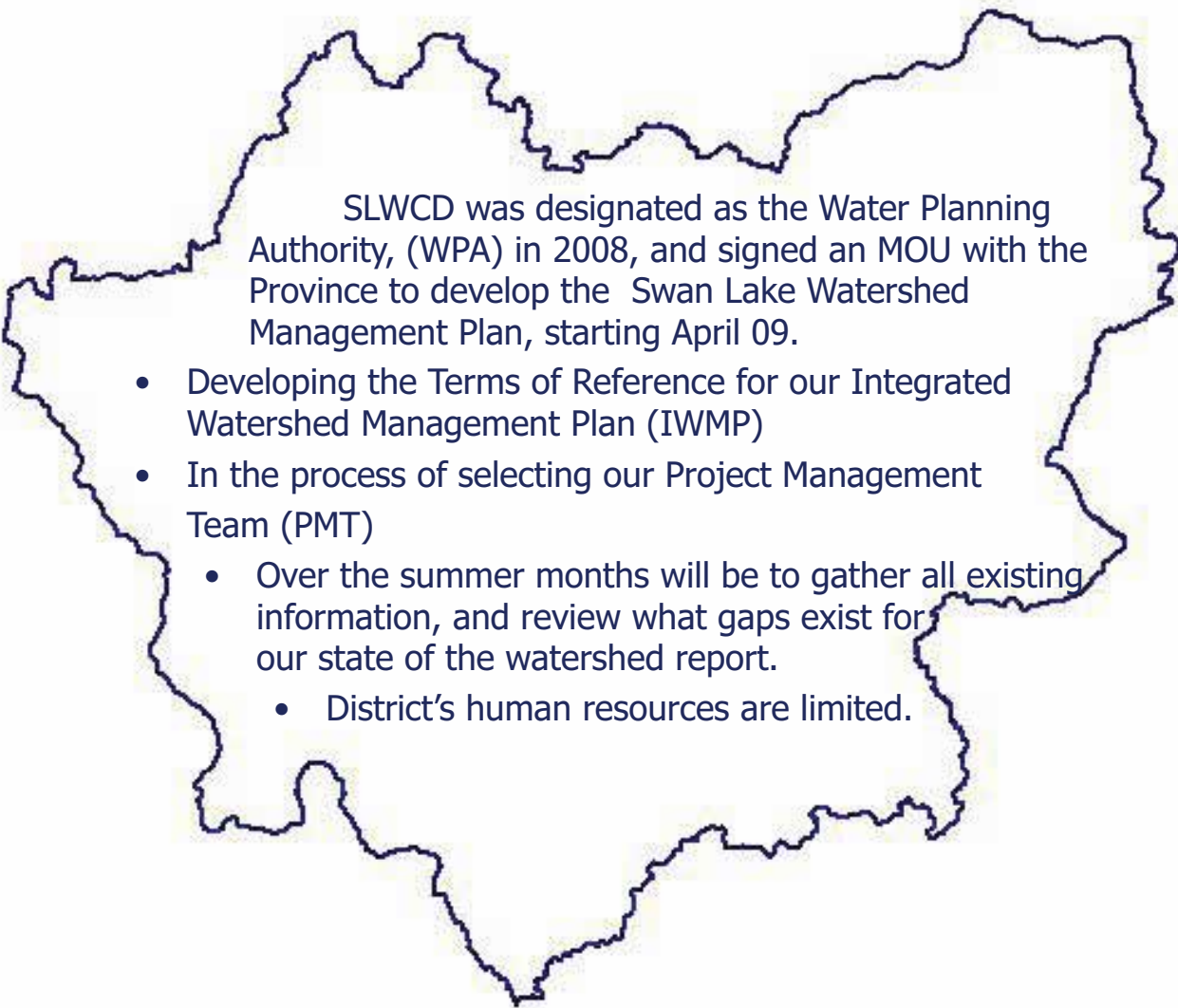
-Compile an inventory of riparian and wetland areas and their health to provide buffers for surface water resources.

Surface Water Runoff Plan

-Encourage BMP's to reduce sediments, nutrients and chemicals.

-Provide landowners with surface water runoff recommendations.

- Assist interested landowners with projects that reduce the amount of runoff water or improve its quality.



SLWCD was designated as the Water Planning Authority, (WPA) in 2008, and signed an MOU with the Province to develop the Swan Lake Watershed Management Plan, starting April 09.

- Developing the Terms of Reference for our Integrated Watershed Management Plan (IWMP)
- In the process of selecting our Project Management Team (PMT)
 - Over the summer months will be to gather all existing information, and review what gaps exist for our state of the watershed report.
 - District's human resources are limited.



Looking Forward - Objectives

- SLWCD believes we can streamline our IWMP process to be all inclusive, taking into account the public and stakeholder consultations in the development of the Swan Lake Basin Management Plan.
 - Ensure the 4 recommended action plans are incorporated into the IWMP.
 - Continue dialogue with the Saskatchewan portion of the watershed to establish a cross border arrangement. Pilot project.



Activities to date

Critical stabilization projects to protect infrastructure and reduce erosion.

- Abandoned well sealing started in fall of 2007.
- May 2008 we completed a low level aerial flight of the Swan and Woody Rivers.
- Water Quality testing on Swan/Woody Rivers, started in 2008 as part of our Riparian and Aquatic assessment. Parameters are the same as Province for sharing and interpretation.
- Grassed waterway program starting this year along Riparian educational workshops.

River Bank Erosion – Non Residential



Creeks/Streams running through farmland - Grassed Waterway Program

